

CHAMP1 Polyclonal Antibody

catalog number: E-AB-19634

Note: Centrifuge before opening to ensure complete recovery of vial contents.

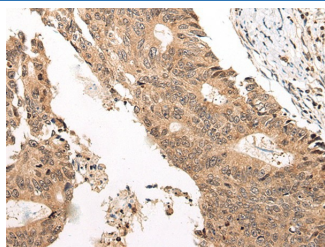
Description

Reactivity	Human;Mouse
Immunogen	Synthetic peptide of human CHAMP1
Host	Rabbit
Isotype	IgG
Purification	Antigen affinity purification
Buffer	Phosphate buffered solution, pH 7.4, containing 0.05% stabilizer and 50% glycerol.

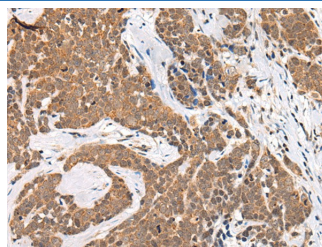
Applications

Applications	Recommended Dilution
IHC	1:30-1:150

Data



Immunohistochemistry of paraffin-embedded Human colorectal cancer tissue using CHAMP1 Polyclonal Antibody at dilution of 1:40(×200)



Immunohistochemistry of paraffin-embedded Human thyroid cancer tissue using CHAMP1 Polyclonal Antibody at dilution of 1:40(×200)

Preparation & Storage

Storage	Store at -20°C Valid for 12 months. Avoid freeze / thaw cycles.
Shipping	The product is shipped with ice pack, upon receipt, store it immediately at the temperature recommended.

Background

CHAMP1 (chromosome alignment maintaining phosphoprotein 1), also known as ZNF828 or C13orf8, is a 812 amino acid protein containing one C2H2-type zinc finger. CHAMP1 is required for the proper alignment of chromosomes during metaphase, undergoing CDK1-dependent phosphorylation at multiple sites during mitosis. The phosphorylation counteracts the negative chromosomal alignment regulation of the zinc-finger domain of CHAMP1. One region of CHAMP1, the FPE region, is responsible for spindle and kinetochore localization, which is essential for proper chromosome alignment. CHAMP1 interacts with MAD2L2, PGOZ, CBX1, CBX3 and CBX5, and may recruit CENPE and CENPF to the kinetochore. The CHAMP1 gene is located on chromosome 13 and is conserved in chimpanzee, Rhesus monkey, dog, cow, mouse, rat and chicken.

For Research Use Only