

# ACTA2 Monoclonal Antibody

Catalog Number:E-AB-22106



**Note:** Centrifuge before opening to ensure complete recovery of vial contents.

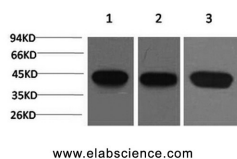
## Description

<b>Reactivity</b>	Human,Mouse,Rat
<b>Immunogen</b>	Synthetic Peptide
<b>Host</b>	Mouse
<b>Isotype</b>	IgG
<b>Clone</b>	Clone:2E2
<b>Purification</b>	Protein A purification
<b>Conjugation</b>	Unconjugated
<b>Formulation</b>	PBS with 0.02% sodium azide and 50% glycerol pH 7.4.

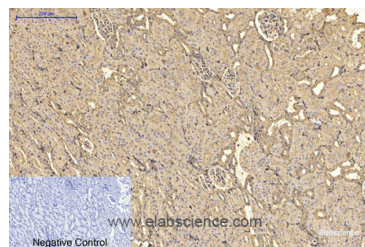
## Applications Recommended Dilution

<b>WB</b>	1:500-1:2000
<b>IHC</b>	1:100-1:300
<b>IF</b>	1:100-1:300

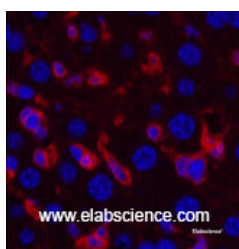
## Data



Western Blot analysis of 1) Hela, 2) 3T3, 3) Rat brain with ACTA2 Monoclonal Antibody.  
**Observed Mw:42kDa**



Immunohistochemistry of paraffin-embedded Rat kidney tissue using ACTA2 Monoclonal Antibody at dilution of 1:200.



Immunofluorescence analysis of Mouse liver tissue using ACTA2 Monoclonal Antibody at dilution of 1:200.

## Preparation & Storage

**Storage** Store at -20°C. Avoid freeze / thaw cycles.

## Background

Actins are highly conserved proteins that are involved in various types of cell motility and are ubiquitously expressed in all

## For Research Use Only

A Reliable Research Partner in Life Science and Medicine

Toll-free: 1-888-852-8623

Web: [www.elabscience.com](http://www.elabscience.com)

Tel: 1-832-243-6086

Email: [techsupport@elabscience.com](mailto:techsupport@elabscience.com)

Fax: 1-832-243-6017

# ACTA2 Monoclonal Antibody

Catalog Number:E-AB-22106



eukaryotic cells.

---

## For Research Use Only

A Reliable Research Partner in Life Science and Medicine

Toll-free: 1-888-852-8623

Tel: 1-832-243-6086

Fax: 1-832-243-6017

Web: [www.elabscience.com](http://www.elabscience.com)

Email: [techsupport@elabscience.com](mailto:techsupport@elabscience.com)