

## Recombinant SPARCL1/SPARC-like 1 Monoclonal Antibody

**catalog number: AN300038P**

**Note:** *Centrifuge before opening to ensure complete recovery of vial contents.*

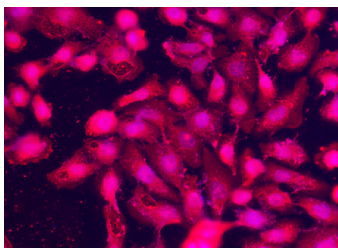
### Description

<b>Reactivity</b>	Human
<b>Immunogen</b>	Recombinant Human SPARCL1 / SPARC-like 1 protein
<b>Host</b>	Rabbit
<b>Isotype</b>	IgG
<b>Clone</b>	9F1
<b>Purification</b>	Protein A
<b>Buffer</b>	0.2 µm filtered solution in PBS

### Applications Recommended Dilution

ICC/IF	1:20-1:100
--------	------------

### Data



Immunofluorescence staining of Human SPARCL1 in A431 cells. Cells were fixed with 4% PFA, permeabilized with 1% Triton X-100 in PBS, blocked with 10% serum, and incubated with rabbit anti-Human SPARCL1 Monoclonal Antibody (1:60). Then cells were stained with the Alexa Fluor® 594-conjugated Goat Anti-rabbit IgG secondary antibody, counterstained with DAPI for nuclear staining (blue).

Positive staining was localized to cytoplasm.

### Preparation & Storage

**Storage** This antibody can be stored at 2°C-8°C for one month without detectable loss of activity. Antibody products are stable for twelve months from date of receipt when stored at -20°C to -80°C. Preservative-Free. Avoid repeated freeze-thaw cycles.

**Shipping** Ice bag

### Background

Predicted to enable calcium ion binding activity; collagen binding activity; and extracellular matrix binding activity. Predicted to be involved in anatomical structure development and regulation of synapse organization. Located in extracellular space.

### For Research Use Only