

## HSPA5 Polyclonal Antibody

catalog number: E-AB-70041

**Note:** Centrifuge before opening to ensure complete recovery of vial contents.

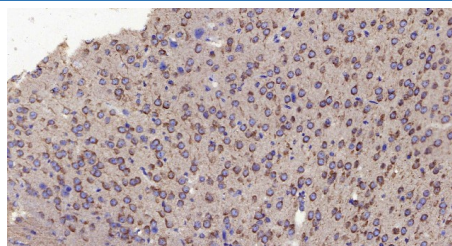
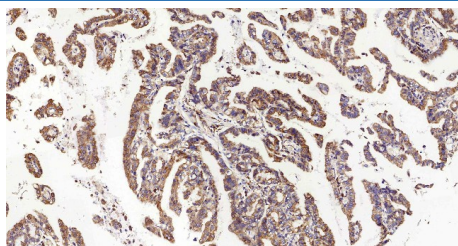
### Description

|                     |   |
|---------------------|---|
| <b>Reactivity</b>   | Human;Mouse;Rat   |
| <b>Immunogen</b>    | KLH conjugated Synthetic peptide corresponding to Mouse GRP78   |
| <b>Host</b>         | Rabbit  |
| <b>Isotype</b>      | IgG   |
| <b>Purification</b> | Affinity purification   |
| <b>Buffer</b>       | Phosphate buffered solution, pH 7.4, containing 0.05% stabilizer, 1% protein protectant and 50% glycerol. |

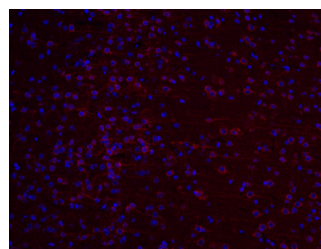
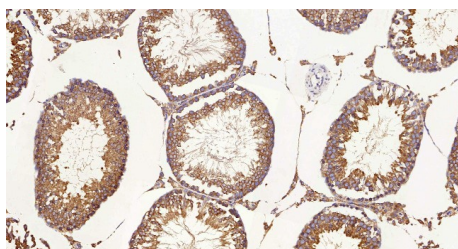
### Applications

| Applications | Recommended Dilution |
|--------------|----------------------|
| IHC          | 1:500-1:1000         |
| IF           | 1:200-1:500          |

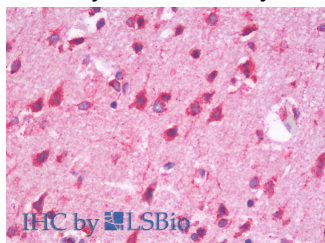
### Data



Immunohistochemistry analysis of paraffin-embedded human stomach cancer using HSPA5 Polyclonal Antibody at dilution of 1:300. Immunohistochemistry analysis of paraffin-embedded Mouse brain using HSPA5 Polyclonal Antibody at dilution of 1:300.



Immunohistochemistry analysis of paraffin-embedded Rat testis using HSPA5 Polyclonal Antibody at dilution of 1:300. Immunofluorescence analysis of paraffin-embedded mouse brain using HSPA5 Polyclonal Antibody at dilution of 1:200.



Immunohistochemistry analysis of paraffin-embedded Human Cortex using HSPA5 Polyclonal Antibody(Elabscience Product Detected by Lifespan).

### Preparation & Storage

### For Research Use Only

Toll-free: 1-888-852-8623  
Web: [www.elabscience.com](http://www.elabscience.com)

Tel: 1-832-243-6086  
Email: [techsupport@elabscience.com](mailto:techsupport@elabscience.com)

Fax: 1-832-243-6017

Rev. V1.6

**Storage**

Store at -20°C Valid for 12 months. Avoid freeze / thaw cycles.

**Shipping**

The product is shipped with ice pack, upon receipt, store it immediately at the temperature recommended.

**Background**

The protein encoded by this gene is a member of the heat shock protein 70 (HSP70) family. It is localized in the lumen of the endoplasmic reticulum (ER), and is involved in the folding and assembly of proteins in the ER. As this protein interacts with many ER proteins, it may play a key role in monitoring protein transport through the cell.

**For Research Use Only**