

CD38 Polyclonal Antibody

catalog number: D-AB-10189L

Note: Centrifuge before opening to ensure complete recovery of vial contents.

Description

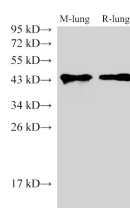
Reactivity	Human;Mouse;Rat
Immunogen	Recombinant Human CD38 protein expressed by E.coli
Host	Rabbit
Isotype	IgG
Purification	Antigen Affinity Purification
Conjugation	Unconjugated
Buffer	PBS with 0.05% Proclin300, 1% protective protein and 50% glycerol, pH7.4

Applications

Recommended Dilution

WB	1:500-1:2000
IHC	1:500-1:1000

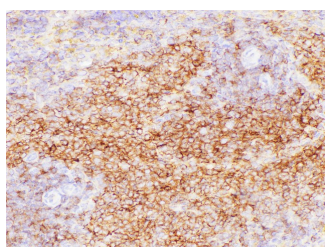
Data



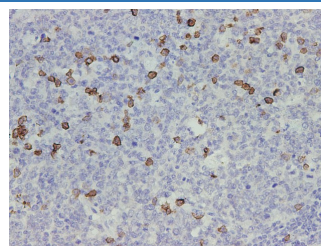
Western Blot analysis of Mouse lung and Rat lung using CD38 Polyclonal Antibody at dilution of 1:1000

Observed-MW:45 kDa

Calculated-MW:34 kDa



Immunohistochemistry of paraffin-embedded Rat spleen using CD38 Polyclonal Antibody at dilution of 1:200



Immunohistochemistry of paraffin-embedded Human tonsil tissue using CD38 Polyclonal Antibody at dilution of 1:1000

Preparation & Storage

Storage	Store at -20°C Valid for 12 months. Avoid freeze / thaw cycles.
Shipping	The product is shipped with ice pack, upon receipt, store it immediately at the temperature recommended.

Background

CD38(cluster of differentiation38), also known as cyclic ADP ribose hydrolase is a glycoprotein found on the surface of many immune cells (white blood cells), including CD4+, CD8+, B lymphocytes and natural killer cells. CD38 also functions in cell adhesion, signal transduction and calcium signaling. In humans, the CD38 protein is encoded by the CD38 gene which is located on chromosome 4.

For Research Use Only