

## Elab Fluor® 700 Anti-Mouse CD161/NK1.1 Antibody[PK136]

Catalog Number: E-AB-F0987UM1

Note: Centrifuge before opening to ensure complete recovery of vial contents.

### Description

<b>Reactivity</b>	Mouse
<b>Host</b>	Mouse
<b>Isotype</b>	Mouse IgG2a, κ
<b>Clone No.</b>	PK136
<b>Isotype Control</b>	Elab Fluor® 700 Mouse IgG2a, κ Isotype Control[C1.18.4] [Product E-AB-F09803M1]
<b>Conjugation</b>	Elab Fluor® 700
<b>Conjugation Information</b>	Elab Fluor® 700 is designed to be excited by the Red laser (627-640 nm) and detected using an optical filter centered near 719 nm (e.g., a 725/40 nm bandpass filter).
<b>Storage Buffer</b>	Phosphate buffered solution, pH 7.2, containing 0.09% sodium azide and 1% BSA.

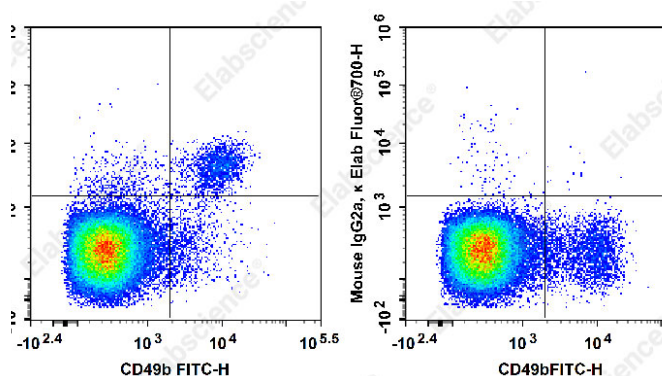
### Applications

### Recommended usage

#### FCM

Each lot of this antibody is quality control tested by flow cytometric analysis. Please check your vial before the experiment. Since applications vary, the appropriate dilutions must be determined for individual use. We suggest each investigator should titrate the reagent to obtain optimal results [The recommended concentration is 0.1-1 μg/10<sup>6</sup> cells in 100 μL volume].

### Data



Staining of C57BL/6 murine splenocytes with FITC Anti-

Mouse CD49b/pan-NK cells Antibody[DX5] and Elab Fluor® 700 Anti-Mouse CD161/NK1.1 Antibody[PK136](left) or Elab

Fluor® 700 Mouse IgG2a, κ Isotype Control(right). Total viable cells were used for analysis.

### Preparation & Storage

<b>Storage</b>	Keep as concentrated solution. This product can be stored at 2-8°C for 12 months. Please protected from prolonged exposure to light and do not freeze.
<b>Shipping</b>	Ice bag

### Antigen Information

<b>Alternate Names</b>	CD161 antigen-like family member C;CD161;NK1.1;CD161c;Killer cell lectin-like receptor subfamily B member 1C;Klrb1c;Ly-55c;NKR-P1 40;NKR-P1.9;NKR-P1C
<b>Uniprot ID</b>	P27814;P27812;Q99JB4;

### For Research Use Only

**Gene ID**

17059

**Background**

NK-1.1 surface antigen, also known as CD161b/CD161c and Ly-55, is encoded by the NKR-P1B/NKR-P1C gene. It is expressed on NK cells and NK-T cells in some mouse strains, including C57BL/6, FVB/N, and NZB, but not AKR, BALB/c, CBA/J, C3H, DBA/1, DBA/2, NOD, SJL, and 129. Expression of NKR-P1C antigen has been correlated with lysis of tumor cells in vitro and rejection of bone marrow allografts in vivo. NK-1.1 has also been shown to play a role in NK cell activation, IFN- $\gamma$  production, and cytotoxic granule release. NK-1.1 and DX5 are commonly used as mouse NK cell markers.