

# Recombinant Human PP2A-C $\alpha$ /PPP2CA protein (His Tag)

Catalog Number: PDEH101010



**Note:** Centrifuge before opening to ensure complete recovery of vial contents.

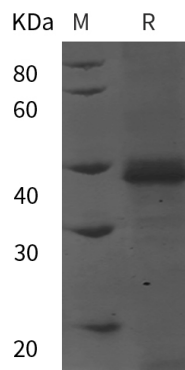
## Description

|                     |                            |
|---------------------|----------------------------|
| <b>Species</b>      | Human                      |
| <b>Mol_Mass</b>     | 39.3 kDa                   |
| <b>Accession</b>    | P67775                     |
| <b>Bio-activity</b> | Not validated for activity |

## Properties

|                       |  |
|-----------------------|--|
| <b>Purity</b>         | > 95% as determined by reducing SDS-PAGE.  |
| <b>Endotoxin</b>      | < 10 EU/mg of the protein as determined by the LAL method  |
| <b>Storage</b>        | Generally, lyophilized proteins are stable for up to 12 months when stored at -20 to -80 °C. Reconstituted protein solution can be stored at 4-8°C for 2-7 days. Aliquots of reconstituted samples are stable at < -20°C for 3 months. |
| <b>Shipping</b>       | This product is provided as lyophilized powder which is shipped with ice packs.  |
| <b>Formulation</b>    | Lyophilized from a 0.2 $\mu$ m filtered solution in PBS with 5% Trehalose and 5% Mannitol.   |
| <b>Reconstitution</b> | It is recommended that sterile water be added to the vial to prepare a stock solution of 0.5 mg/mL. Concentration is measured by UV-Vis.   |

## Data



> 95 % as determined by reducing SDS-PAGE.

## Background

Protein Phosphatase 2A (PP2A) is an enzyme that removes phosphates covalently attached to serine and threonine residues in proteins. It contains three subunits, a catalytic subunit C (PP2Ac), an assembly/structural subunit A (PP2Aa), and a regulatory subunit B (PP2Ab). PP2A is a ubiquitous enzyme that plays a role in regulating many cellular activities varying from ion transport in erythrocytes to suppressing tumor growth. Binding of the SV40 small T antigen to the PP2A phosphatase complex is known to cause oncogenic transformation.

## For Research Use Only

A Reliable Research Partner in Life Science and Medicine  
Tel:400-999-2100

Email:[techsupport@elabscience.cn](mailto:techsupport@elabscience.cn)

Web:[www.elabscience.cn](http://www.elabscience.cn)

Rev. V1.2