

SNRPA Polyclonal Antibody

Catalog Number:E-AB-52427



Note: Centrifuge before opening to ensure complete recovery of vial contents.

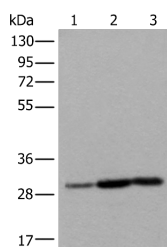
Description

Reactivity	Human, Mouse
Immunogen	Full length fusion protein
Host	Rabbit
Isotype	IgG
Purification	Antigen affinity purification
Conjugation	Unconjugated
Formulation	PBS with 0.05% NaN ₃ and 40% Glycerol,pH7.4

Applications Recommended Dilution

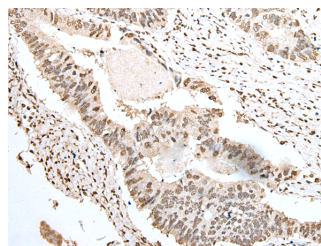
WB	1:500-1:2000
IHC	1:40-1:250
ELISA	1:5000-1:10000

Data



Western blot analysis of Human heart tissue A431 cell Human fetal liver tissue lysates using SNRPA Polyclonal Antibody at dilution of 1:550

Observed Mw:Refer to figures
Calculated Mw:31 kDa



Immunohistochemistry of paraffin-embedded Human colorectal cancer tissue using SNRPA Polyclonal Antibody at dilution of 1:55(×200)

Preparation & Storage

Storage Store at -20°C. Avoid freeze / thaw cycles.

Background

The protein encoded by this gene associates with stem loop II of the U1 small nuclear ribonucleoprotein, which binds the 5' splice site of precursor mRNAs and is required for splicing. The encoded protein autoregulates itself by polyadenylation inhibition of its own pre-mRNA via dimerization and has been implicated in the coupling of splicing and polyadenylation.

For Research Use Only

A Reliable Research Partner in Life Science and Medicine

Toll-free: 1-888-852-8623

Web: www.elabscience.com

Tel: 1-832-243-6086

Email: techsupport@elabscience.com

Fax: 1-832-243-6017