

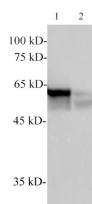
## alpha Tubulin Monoclonal Antibody

catalog number: E-AB-48012

**Note:** Centrifuge before opening to ensure complete recovery of vial contents.

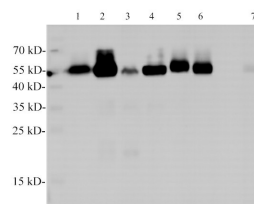
Description	
Reactivity	Human;Mouse;E.coli;Scallop;Zebrafish
Immunogen	Recombinant human TUBA protein
Host	Mouse
Isotype	IgG2a
Clone	2H2
Purification	Protein A/G Purification
Conjugation	Unconjugated
Buffer	PBS with 0.05% Proclin300, 1% protective protein and 50% glycerol, pH7.4
Applications	Recommended Dilution
WB	1:2000-5000

## Data



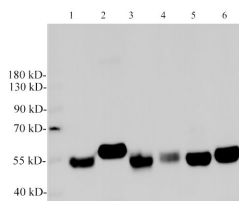
Western Blotting with anti-TUBA monoclonal antibody at dilution of 1:3000. Lane 1: Scallop Muscle lysates, Lane 2: Zebrafish lysates

**Observed-MW:55 kDa**  
**Calculated-MW:55 kDa**



Western Blotting with anti-TUBA monoclonal antibody at dilution of 1:2000. Lane 1: Hela cell lysates, Lane 2: jurkat cell lysates, Lane, 3: 293T lysates, Lane 4: MCF-7 cell lysates, Lane 5: HT-29 cell lysates, Lane 6: HepG2 cell lysates, Lane 7: Rat kidney lysates

**Observed-MW:55 kDa**  
**Calculated-MW:55 kDa**



Western Blotting with anti-TUBA monoclonal antibody at dilution of 1:2000. Lane 1: NIH/3T3 cell lysates, Lane 2: Raw264.7 cell lysates, Lane 3: Mouse heart lysates, Lane 4: Mouse spleen lysates, Lane 5: Mouse brain lysates, Lane 6: Mouse kidney lysates

**Observed-MW:55 kDa**  
**Calculated-MW:55 kDa**

## Preparation & Storage

### For Research Use Only

Tel: 400-999-2100

Web: [www.elabscience.cn](http://www.elabscience.cn)

Email: [techsupport@elabscience.cn](mailto:techsupport@elabscience.cn)

Rev. V2.2

**Storage**

Store at -20°C Valid for 12 months. Avoid freeze / thaw cycles.

**Shipping**

The product is shipped with ice pack, upon receipt, store it immediately at the temperature recommended.

**Background**

Tubulin is a highly conserved  $\alpha\beta$  dimeric protein present and is essential for all eukaryotes.  $\alpha\beta$ -Tubulin dimers assemble into microtubules, dynamic polymers important in a variety of functions, most noticeably, mitosis. Tubulin assembly and disassembly are linked to guanosine triphosphate hydrolysis.