

## TCL1B Polyclonal Antibody

catalog number: **E-AB-64339**

**Note:** Centrifuge before opening to ensure complete recovery of vial contents.

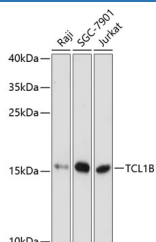
### Description

<b>Reactivity</b>	Human;Mouse;Rat
<b>Immunogen</b>	Recombinant fusion protein of human TCL1B (NP_004909.1).
<b>Host</b>	Rabbit
<b>Isotype</b>	IgG
<b>Purification</b>	Affinity purification
<b>Buffer</b>	Phosphate buffered solution, pH 7.4, containing 0.05% stabilizer and 50% glycerol.

### Applications

<b>WB</b>	1:500-1:1000
-----------	--------------

### Data



Western blot analysis of extracts of various cell lines using  
TCL1B Polyclonal Antibody at dilution of 1:3000.

**Observed-MW:15 kDa**

**Calculated-MW:14 kDa**

### Preparation & Storage

<b>Storage</b>	Store at -20°C Valid for 12 months. Avoid freeze / thaw cycles.
<b>Shipping</b>	The product is shipped with ice pack, upon receipt, store it immediately at the temperature recommended.

### Background

TCL1B (TCL1 Family AKT Coactivator B) is a Protein Coding gene. Diseases associated with TCL1B include T-Cell Lymphoblastic Leukemia/Lymphoma and Leukemia. Among its related pathways are PI3K-Akt signaling pathway. An important paralog of this gene is MTCP1.

### For Research Use Only