

## AF/LE Purified Anti-Human HLA-DR Antibody[L243]

catalog number: E-AB-F11110

**Note:** Centrifuge before opening to ensure complete recovery of vial contents.

### Description

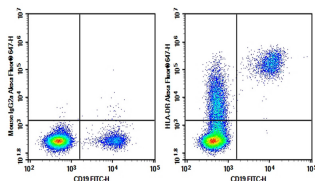
<b>Reactivity</b>	Human
<b>Immunogen</b>	Recombinant Human HLA-DR protein
<b>Host</b>	Mouse
<b>Isotype</b>	Mouse IgG2a, $\kappa$
<b>Clone</b>	L243
<b>Purification</b>	>98%, Protein A/G purified
<b>Conjugation</b>	None (AF/LE)
<b>Buffer</b>	Sterile PBS, pH 7.2. < 1.0 EU per mg of the antibody as determined by the LAL method

### Applications

### Recommended Dilution

<b>FCM</b>	2 $\mu\text{g/mL}$ ( $1 \times 10^5$ - $5 \times 10^5$ cells)
------------	---

### Data



Human peripheral blood lymphocytes were stained with 0.2  $\mu\text{g}$  AF/LE Purified Anti-Human HLA-DR Antibody[L243] (Right) and 0.2  $\mu\text{g}$  Mouse IgG2a,  $\kappa$  Isotype Control (Left), followed by Alexa Fluor® 647-conjugated Goat Anti-Mouse IgG Secondary Antibody, then anti-Human CD19 FITC-conjugated Monoclonal Antibody.

### Preparation & Storage

<b>Storage</b>	Store at 4°C valid for 12 months or -20°C valid for long term storage, avoid freeze / thaw cycles. This preparation contains no preservatives, thus it should be handled under aseptic conditions.
<b>Shipping</b>	Ice bag

### Background

HLA-DR is a heterodimeric cell surface glycoprotein comprised of a 36 kD  $\alpha$  (heavy) chain and a 27 kD  $\beta$  (light) chain. It is expressed on B cells, activated T cells, monocytes/macrophages, dendritic cells, and other non-professional APCs. In conjunction with the CD3/TCR complex and CD4 molecules, HLA-DR is critical for efficient peptide presentation to CD4 + T cells.

### For Research Use Only