

Recombinant Mouse TIMP2/TIMP-2 Protein (His Tag)



Catalog Number:PKSM041160

Note: Centrifuge before opening to ensure complete recovery of vial contents.

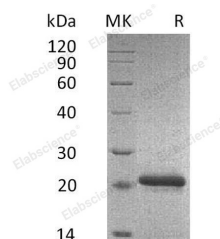
Description

Synonyms	TIMP-2;CSC-21Ktissue inhibitor of metalloproteinase 2;metalloproteinase inhibitor 2;TIMP metalloproteinase inhibitor 2;Tissue inhibitor of metalloproteinase 2.
Species	Mouse
Expression Host	HEK293 Cells
Sequence	Cys27-Pro220
Accession	P25785
Calculated Molecular Weight	22.5 kDa
Observed molecular weight	21 kDa
Tag	C-His

Properties

Purity	> 95 % as determined by reducing SDS-PAGE.
Endotoxin	< 1.0 EU per µg of the protein as determined by the LAL method.
Storage	Store at < -20°C, stable for 6 months. Please minimize freeze-thaw cycles.
Shipping	This product is provided as liquid. It is shipped at frozen temperature with blue ice/gel packs. Upon receipt, store it immediately at < - 20°C.
Formulation	Supplied as a 0.2 µm filtered solution of PBS, pH7.4.
Reconstitution	Not Applicable

Data



> 95 % as determined by reducing SDS-PAGE.

Background

Mouse Metalloproteinase inhibitor 2(TIMP-2), belongs to a family of proteins that regulate the activation and proteolytic activity of matrix metalloproteinases (MMPs). There are four mammalian members of the family; TIMP-1, TIMP-2, TIMP-3, and TIMP-4. The TIMP-2 is detected in testis, retina, hippocampus and cerebral cortex. The function of TIMP 2 protein is to inhibit MMPs non covalently by the formation of binary complexes. Complexes with metalloproteinases (such as collagenases) and irreversibly inactivates them by binding to their catalytic zinc cofactor. And the interaction with MMP-14 facilitates the activation of pro-MMP-2. It has been shown that the binding of TIMP 2 to $\alpha 3\beta 1$ integrin results in the inhibition of endothelial cell proliferation and angiogenesis.

For Research Use Only

A Reliable Research Partner in Life Science and Medicine

Toll-free: 1-888-852-8623

Web: www.elabscience.com

Tel: 1-832-243-6086

Email: techsupport@elabscience.com

Fax: 1-832-243-6017