

Recombinant Phospho-S6 Ribosomal Protein (Ser235, Ser236) Monoclonal Antibody

catalog number: AN302091L

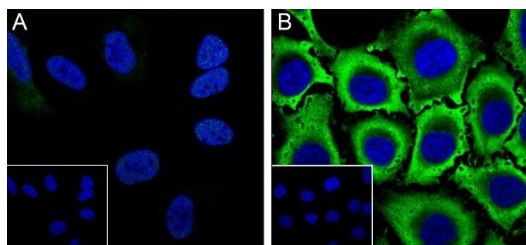
Note: Centrifuge before opening to ensure complete recovery of vial contents.

Description

Reactivity	Human;Mouse
Immunogen	phosphorylated human S6 Ribosomal Protein (Ser235/236) peptide
Host	Rabbit
Isotype	IgG, κ
Clone	A815
Purification	Protein A purified
Buffer	PBS, 50% glycerol, 0.05% Proclin 300, 0.05% protein protectant.

Applications Recommended Dilution

WB	1:500-1:1000
IF	1:100-1:300



Immunofluorescent analysis of (4% Paraformaldehyde) fixed (A): HeLa, (B): HeLa + Anisomycin (250ng/ml, 30min) cells using anti-Phospho-S6 Ribosomal Protein (Ser235, Ser236) Monoclonal Antibody at dilution of 1:300.

Preparation & Storage

Storage	Store at -20°C Valid for 12 months. Avoid freeze / thaw cycles.
Shipping	Ice bag

Background

Phosphorylation of S6 ribosomal protein correlates with an increase in translation of mRNA transcripts that contain an oligopyrimidine tract in their 5' untranslated regions. These particular mRNA transcripts (5'TOP) encode proteins involved in cell cycle progression, as well as ribosomal proteins and elongation factors necessary for translation. Important S6 ribosomal protein phosphorylation sites include several residues (Ser235, Ser236, Ser240, and Ser244) located within a small, carboxy-terminal region of S6 protein.

For Research Use Only