

## LDHC Polyclonal Antibody

**catalog number: E-AB-40384**

**Note:** Centrifuge before opening to ensure complete recovery of vial contents.

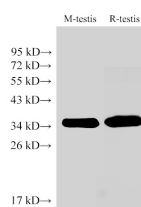
### Description

<b>Reactivity</b>	Mouse;Rat
<b>Immunogen</b>	Recombinant Mouse L-lactate dehydrogenase C chain protein
<b>Host</b>	Rabbit
<b>Isotype</b>	IgG
<b>Purification</b>	Antigen Affinity Purification
<b>Buffer</b>	PBS with 0.05% Proclin300, 1% protective protein and 50% glycerol, pH7.4

### Applications Recommended Dilution

<b>WB</b>	1:1000-1:2500
-----------	---------------

### Data



Western Blot analysis of 1)Mouse testis, 2)Rat testis using LDHC Polyclonal Antibody at dilution of 1:1000.

**Observed-MW:35 kDa**

**Calculated-MW:35 kDa**

### Preparation & Storage

<b>Storage</b>	Store at -20°C Valid for 12 months. Avoid freeze / thaw cycles.
<b>Shipping</b>	The product is shipped with ice pack,upon receipt,store it immediately at the temperature recommended.

### Background

Lactate dehydrogenase C catalyzes the conversion of L-lactate and NAD to pyruvate and NADH in the final step of anaerobic glycolysis. LDHC is testis-specific and belongs to the lactate dehydrogenase family. Two transcript variants have been detected which differ in the 5' untranslated region.

### For Research Use Only