

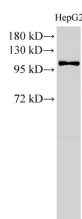
MCM3 Polyclonal Antibody

catalog number: E-AB-40230

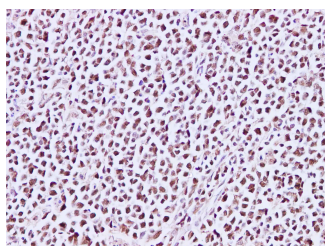
Note: Centrifuge before opening to ensure complete recovery of vial contents.

Description	
Reactivity	Human;Mouse;Rat
Immunogen	Recombinant Human DNA replication licensing factor MCM3 protein
Host	Rabbit
Isotype	IgG
Purification	Antigen Affinity Purification
Conjugation	Unconjugated
Buffer	PBS with 0.05% Proclin300, 1% protective protein and 50% glycerol, pH7.4
Applications	Recommended Dilution
WB	1:500-1:1000
IHC	1:50-1:200

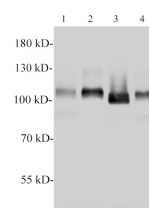
Data



Western Blot analysis of HepG2 cell using MCM3 Polyclonal Antibody at dilution of 1:500
Observed-MW:100 kDa
Calculated-MW:91,96 kDa

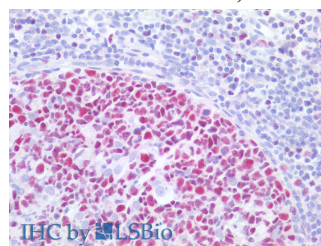


Immunohistochemistry of paraffin-embedded Human lymph node using MCM3 Polyclonal Antibody at dilution of 1:200



Western blotting with anti-MCM3 polyclonal antibody at dilution of 1:1000. Lane 1:PC-12 cell lysate,Lane 2:C6 cell lysate,lane 3:Raw264.7 cell lysate,lane 4:NIH/3T3 cell lysate.

Observed-MW:100 kDa
Calculated-MW:91,96 kDa



Immunohistochemistry of paraffin-embedded Human tonsil using MCM3 Polyclonal Antibody at dilution of 1:200(Elabscience Product Detected by Lifespan).

Preparation & Storage	
Storage	Store at -20°C Valid for 12 months. Avoid freeze / thaw cycles.
Shipping	The product is shipped with ice pack,upon receipt,store it immediately at the temperature recommended.

Background

For Research Use Only

The protein encoded by this gene is one of the highly conserved mini-chromosome maintenance proteins (MCM) that are involved in the initiation of eukaryotic genome replication. The hexameric protein complex formed by MCM proteins is a key component of the pre-replication complex (pre_RC) and may be involved in the formation of replication forks and in the recruitment of other DNA replication related proteins. This protein is a subunit of the protein complex that consists of MCM2-7. It has been shown to interact directly with mCM5/CDC46. This protein also interacts with and is acetylated by MCM3AP, a chromatin-associated acetyltransferase. The acetylation of this protein inhibits the initiation of DNA replication and cell cycle progression. Two transcript variants encoding different isoforms have been found for this gene.