

RAB41 Polyclonal Antibody

catalog number: E-AB-15470

Note: Centrifuge before opening to ensure complete recovery of vial contents.

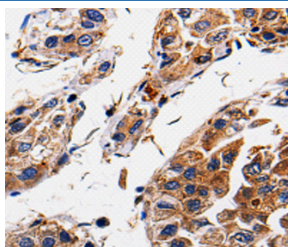
Description

Reactivity	Human
Immunogen	Synthetic peptide of human RAB41
Host	Rabbit
Isotype	IgG
Purification	Affinity purification
Buffer	Phosphate buffered solution, pH 7.4, containing 0.05% stabilizer and 50% glycerol.

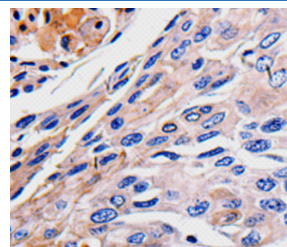
Applications Recommended Dilution

IHC	1:50-1:200
------------	------------

Data



Immunohistochemistry of paraffin-embedded Human gastric cancer tissue using RAB41 Polyclonal Antibody at dilution 1:60



Immunohistochemistry of paraffin-embedded Human liver cancer tissue using RAB41 Polyclonal Antibody at dilution 1:60

Preparation & Storage

Storage	Store at -20°C Valid for 12 months. Avoid freeze / thaw cycles.
Shipping	The product is shipped with ice pack, upon receipt, store it immediately at the temperature recommended.

Background

This gene encodes a small GTP-binding protein that belongs to the largest family within the Ras superfamily. These proteins function as regulators of membrane trafficking. They cycle between inactive GDP-bound and activated GTP-bound states, which is controlled by GTP hydrolysis-activating proteins (GAPs). This family member can be activated by the GAP protein RN-Tre, and it is localized to the Golgi complex.

For Research Use Only