

PE/Elab Fluor® 594 Anti-Human CD156c(ADAM10) Antibody[11G2]

Catalog Number: AN00355P

Note: Centrifuge before opening to ensure complete recovery of vial contents.

Description

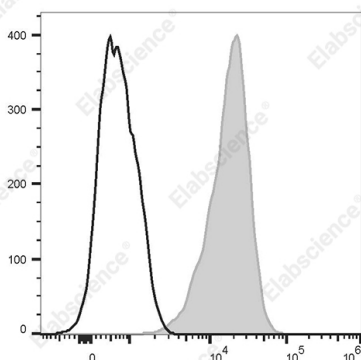
Reactivity	Human
Host	Mouse
Isotype	Mouse IgG1, κ
Clone No.	11G2
Isotype Control	PE/Elab Fluor® 594 Mouse IgG1, κ Isotype Control[MOPC-21] [Product E-AB-F09792P]
Conjugation	PE/Elab Fluor® 594
Conjugation Information	PE/Elab Fluor® 594 is designed to be excited by the blue (488 nm), Green (532 nm) and yellow-green (561 nm) lasers and detected using an optical filter centered near 620 nm (e.g., a 610/20 nm bandpass filter).
Storage Buffer	Phosphate buffered solution, pH 7.2, containing 0.09% stabilizer.

Applications

Recommended usage

FCM	Each lot of this antibody is quality control tested by flow cytometric analysis. The amount of the reagent is suggested to be used 5 μL of antibody per test (million cells in 100 μL staining volume or per 100 μL of whole blood). Please check your vial before the experiment. Since applications vary, the appropriate dilutions must be determined for individual use.
------------	---

Data



Staining of normal human peripheral blood cells with PE/Elab Fluor® 594 Anti-Human CD156c (ADAM10) Antibody[11G2] (filled gray histogram) or PE/Elab Fluor® 594 Mouse IgG1, κ Isotype Control (empty black histogram). Cells in the lymphocytes gate were used for analysis.

Preparation & Storage

Storage	Keep as concentrated solution. This product can be stored at 2-8°C for 24 months. Please protected from prolonged exposure to light and do not freeze.
Shipping	Ice bag

Antigen Information

Alternate Names	MADM;KUZ;alpha-secretase
Uniprot ID	O14672

For Research Use Only

Gene ID

4684

Background

CD156c, also known as a disintegrin and metalloproteinase domain-containing protein 10 (ADAM10), is a 748 amino acid type I membrane glycoprotein ubiquitously expressed on most cell types. It consists of multiple functional domains, including a N-terminal prodomain, catalytic domain, cysteine-rich domain, transmembranous domain, and cytoplasmic domain. It is secreted as a precursor protein and becomes as the activate/mature form through removing the ADAM10 prodomain by proprotein convertase 7 and furin. ADAM10 functions as metalloproteinase to cleave several molecules including Notch, pro-TNF- α , amyloid precursor protein, myelin basic protein, and type IV collagen. It mediates the release of several cell adhesion molecules such as vascular endothelial cadherin or L-selectin to regulate endothelial permeability and leukocyte transmigration. Dysregulation of ADAM activity may contribute to the pathogenesis of vascular diseases.