

S-tag Polyclonal Antibody

catalog number: E-AB-40522

Note: Centrifuge before opening to ensure complete recovery of vial contents.

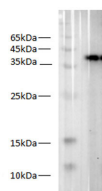
Description

Reactivity	All
Immunogen	Synthetic peptide corresponding to S tag conjugated to keyhole limpet haemocyanin.
Host	Rabbit
Isotype	IgG
Purification	Antigen Affinity Purification
Conjugation	Unconjugated
buffer	PBS with 0.05% proclin 300, 1% protective protein and 50% glycerol,pH7.4

Applications Recommended Dilution

WB	1:2000-4000
-----------	-------------

Data



Western blot of S-Tag fusion protein with anti-S tag antibody
at dilution of 1:2000.

Observed-MV:40 kDa

Calculated-MV:40 kDa

Preparation & Storage

Storage	Store at -20°C Valid for 12 months. Avoid freeze / thaw cycles.
Shipping	The product is shipped with ice pack,upon receipt,store it immediately at the temperature recommended.

Background

S tag is an epitope tag composed of a 15 residue peptide, KETAAAKFERQHMDs, derived from the pancreatic ribonuclease A. This interactive complex (S - tag/S - protein) results in micromolar affinity – dependent upon pH, temperature, and ionic strength . T

For Research Use Only