

PRIM2 Polyclonal Antibody

Catalog Number: E-AB-64084



Note: Centrifuge before opening to ensure complete recovery of vial contents.

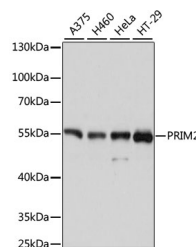
Description

Reactivity	Human, Mouse
Immunogen	Recombinant fusion protein of human PRIM2 (NP_000938.2).
Host	Rabbit
Isotype	IgG
Purification	Affinity purification
Conjugation	Unconjugated
Formulation	PBS with 0.02% sodium azide, 50% glycerol, pH7.3.

Applications Recommended Dilution

WB	1:500-1:2000
-----------	--------------

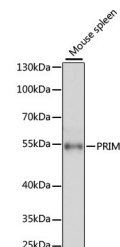
Data



Western blot analysis of extracts of various cell lines using PRIM2 Polyclonal Antibody at dilution of 1:3000.

Observed Mw: 59kDa

Calculated Mw: 19kDa/58kDa



Western blot analysis of extracts of Mouse spleen using PRIM2 Polyclonal Antibody at dilution of 1:3000.

Preparation & Storage

Storage Store at -20°C. Avoid freeze / thaw cycles.

Background

This gene encodes the 58 kilodalton subunit of DNA primase, an enzyme that plays a key role in the replication of DNA. The encoded protein forms a heterodimer with a 49 kilodalton subunit. This heterodimer functions as a DNA-directed RNA polymerase to synthesize small RNA primers that are used to create Okazaki fragments on the lagging strand of the DNA. Alternative splicing of this gene results in multiple transcript variants. This gene has a related pseudogene, which is also present on chromosome 6.

For Research Use Only

A Reliable Research Partner in Life Science and Medicine

Toll-free: 1-888-852-8623

Web: www.elabscience.com

Tel: 1-832-243-6086

Email: techsupport@elabscience.com

Fax: 1-832-243-6017