

## GUCA1A Polyclonal Antibody

catalog number: E-AB-19163

**Note:** Centrifuge before opening to ensure complete recovery of vial contents.

### Description

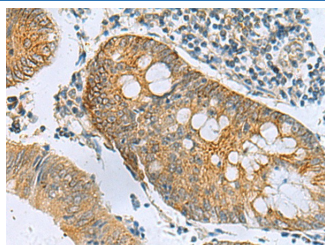
<b>Reactivity</b>	Human;Mouse
<b>Immunogen</b>	Fusion protein of human GUCA1A
<b>Host</b>	Rabbit
<b>Isotype</b>	IgG
<b>Purification</b>	Antigen affinity purification
<b>Conjugation</b>	Unconjugated
<b>Buffer</b>	Phosphate buffered solution, pH 7.4, containing 0.05% stabilizer and 50% glycerol.

### Applications

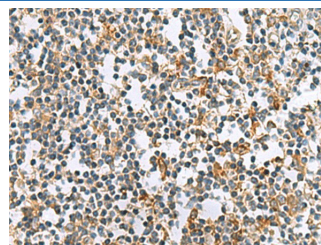
### Recommended Dilution

<b>IHC</b>	1:100-1:300
------------	-------------

### Data



Immunohistochemistry of paraffin-embedded Human colorectal cancer tissue using GUCA1A Polyclonal Antibody at dilution of 1:105(×200)



Immunohistochemistry of paraffin-embedded Human tonsil tissue using GUCA1A Polyclonal Antibody at dilution of 1:105(×200)

### Preparation & Storage

<b>Storage</b>	Store at -20°C Valid for 12 months. Avoid freeze / thaw cycles.
<b>Shipping</b>	The product is shipped with ice pack, upon receipt, store it immediately at the temperature recommended.

### Background

This gene encodes an enzyme that plays a role in the recovery of retinal photoreceptors from photobleaching. This enzyme promotes the activity of retinal guanylyl cyclase-1 (GC1) at low calcium concentrations and inhibits GC1 at high calcium concentrations. Mutations in this gene can cause cone dystrophy 3 and code-rod dystrophy 14. Alternative splicing results in multiple transcript variants.