

GTF3C3 Polyclonal Antibody

catalog number: E-AB-18064

Note: Centrifuge before opening to ensure complete recovery of vial contents.

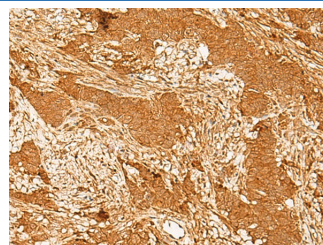
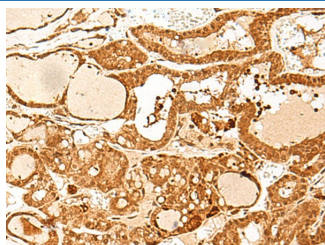
Description

Reactivity	Human
Immunogen	Synthetic peptide of human GTF3C3
Host	Rabbit
Isotype	IgG
Purification	Antigen affinity purification
Buffer	Phosphate buffered solution, pH 7.4, containing 0.05% stabilizer and 50% glycerol.

Applications Recommended Dilution

IHC	1:40-1:200
------------	------------

Data



Immunohistochemistry of paraffin-embedded Human thyroid cancer tissue using GTF3C3 Polyclonal Antibody at dilution of 1:30(×200) Immunohistochemistry of paraffin-embedded Human ovarian cancer tissue using GTF3C3 Polyclonal Antibody at dilution of 1:30(×200)

Preparation & Storage

Storage	Store at -20°C Valid for 12 months. Avoid freeze / thaw cycles.
Shipping	The product is shipped with ice pack, upon receipt, store it immediately at the temperature recommended.

Background

The protein encoded by this gene is part of the TFIIC2 complex, which binds to the promoters of small nuclear and cytoplasmic RNA genes in order to recruit RNA polymerase III. The TFIIC2 complex is composed of six subunits. Two transcript variants encoding different isoforms have been found for this gene. GTF3C3 (General Transcription Factor IIC Subunit 3) is a Protein Coding gene. Diseases associated with GTF3C3 include Tooth Agenesis. Among its related pathways are Gene Expression and RNA Polymerase III Transcription Initiation.

For Research Use Only