

Elab Fluor® 488 Anti-Mouse Ly6C Antibody[Monts 1]

Catalog Number: E-AB-F1121UL

Note: Centrifuge before opening to ensure complete recovery of vial contents.

Description

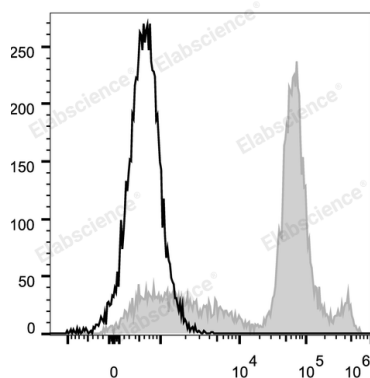
| | |
|--------------------------------|---|
| Reactivity | Mouse |
| Host | Rat |
| Isotype | Rat IgG2a, κ |
| Clone No. | Monts 1 |
| Isotype Control | Elab Fluor® 488 Rat IgG2a, κ Isotype Control[2A3] [Product E-AB-F09833L] |
| Conjugation | Elab Fluor® 488 |
| Conjugation Information | Elab Fluor® 488 is designed to be excited by the Blue laser (488 nm) and detected using an optical filter centered near 520 nm (e.g., a 525/40 nm bandpass filter). |
| Storage Buffer | Phosphate buffered solution, pH 7.2, containing 0.09% stabilizer and 1% protein protectant. |

Applications

Recommended usage

| | |
|------------|---|
| FCM | Each lot of this antibody is quality control tested by flow cytometric analysis. Please check your vial before the experiment. Since applications vary, the appropriate dilutions must be determined for individual use. We suggest each investigator should titrate the reagent to obtain optimal results [The recommended concentration is 0.1-1 $\mu\text{g}/10^6$ cells in 100 μL volume]. |
|------------|---|

Data



C57BL/6 murine bone marrow cells are stained with Elab

Fluor® 488 Anti-Mouse Ly6C Antibody (filled gray histogram). Unstained bone marrow cells (empty black histogram) are used as control.

Preparation & Storage

| | |
|-----------------|---|
| Storage | Keep as concentrated solution. This product can be stored at 2-8°C for 12 months. Please protected from prolonged exposure to light and do not freeze. |
| Shipping | Ice bag |

Antigen Information

| | |
|------------------------|--|
| Alternate Names | locus C;Ly 6C;Ly6c1;Ly6c2;Lymphocyte antigen 6 complex |
| Uniprot ID | P0CW03 |
| Gene ID | 17067 |

For Research Use Only

Toll-free: 1-888-852-8623
Web: www.elabscience.com

Tel: 1-832-243-6086
Email: techsupport@elabscience.com

Fax: 1-832-243-6017

Rev. V1.7

Background

Most hematopoietic cells express one or more members of Ly-6 family. The expression of Ly-6 varies with development stage and activation. Ly-6C is a 14-17 kD GPI-linked surface protein expressed on mouse monocyte/macrophage cells, endothelial cells, neutrophils, and some T cell subsets. Ly-6C is reported to be an indicator of memory CD8+ T cells.