

Recombinant SDHA Monoclonal Antibody

catalog number: **AN301107L**

Note: Centrifuge before opening to ensure complete recovery of vial contents.

Description

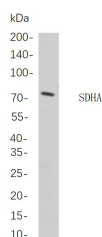
Reactivity	Human;Mouse;Rat
Immunogen	Recombinant Human SDHA protein
Host	Rabbit
Isotype	IgG, κ
Clone	10F11
Purification	Protein A
Buffer	PBS, 50% glycerol, 0.05% Proclin 300, 0.05% protein protectant.

Applications

Recommended Dilution

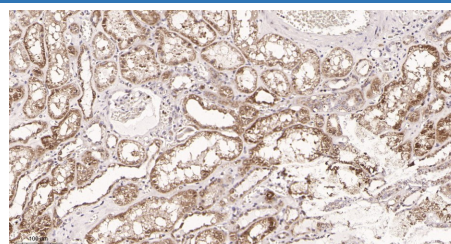
IHC	1:200-1000
WB	1:1000-5000

Data

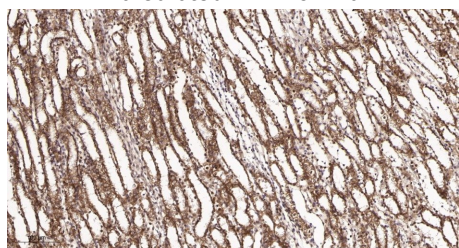


Western Blot with Recombinant SDHA Monoclonal Antibody at dilution of 1:1000 dilution. Lane A: Hela cells.

Observed-MW:73 kDa
Calculated-MW:73 kDa



Immunohistochemistry of paraffin-embedded human kidney tissue using Recombinant SDHA Monoclonal Antibody at dilution of 1:200.



Immunohistochemistry of paraffin-embedded rat kidney tissue using Recombinant SDHA Monoclonal Antibody at dilution of 1:200.

Preparation & Storage

Storage	Store at -20°C Valid for 12 months. Avoid freeze / thaw cycles.
Shipping	Ice bag

Background

This gene encodes a major catalytic subunit of succinate-ubiquinone oxidoreductase, a complex of the mitochondrial respiratory chain. The complex is composed of four nuclear-encoded subunits and is localized in the mitochondrial inner membrane. Mutations in this gene have been associated with a form of mitochondrial respiratory chain deficiency known as Leigh Syndrome. A pseudogene has been identified on chromosome 3q29. Alternatively spliced transcript variants encoding different isoforms have been found for this gene.

For Research Use Only

Toll-free: 1-888-852-8623
Web: www.elabscience.com

Tel: 1-832-243-6086
Email: techsupport@elabscience.com

Fax: 1-832-243-6017

Rev. V1.0