

Recombinant Human INSL4 Protein (His Tag)

Catalog Number: PKSH032370

Note: Centrifuge before opening to ensure complete recovery of vial contents.

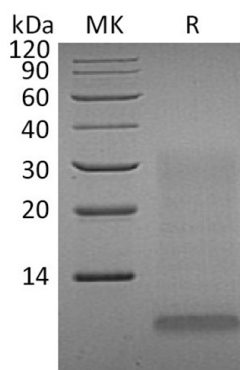
Description

| | |
|----------------------|---|
| Species | Human |
| Source | HEK293 Cells-derived Human INSL4 protein Ala26-Thr139, with an C-terminal His |
| Calculated MW | 13.6 kDa |
| Observed MW | 9 kDa |
| Accession | Q14641 |
| Bio-activity | Not validated for activity |

Properties

| | |
|-----------------------|---|
| Purity | > 80 % as determined by reducing SDS-PAGE. |
| Endotoxin | < 1.0 EU per µg of the protein as determined by the LAL method. |
| Storage | Generally, lyophilized proteins are stable for up to 12 months when stored at -20 to -80°C. Reconstituted protein solution can be stored at 4-8°C for 2-7 days. Aliquots of reconstituted samples are stable at < -20°C for 3 months. |
| Shipping | This product is provided as lyophilized powder which is shipped with ice packs. |
| Formulation | Lyophilized from a 0.2 µm filtered solution of 20mM Tris-HCl, 150mM NaCl, pH 8.0. Normally 5% - 8% trehalose, mannitol and 0.01% Tween 80 are added as protectants before lyophilization. |
| Reconstitution | Please refer to the specific buffer information in the printed manual. |

Data



> 80 % as determined by reducing SDS-PAGE.

Background

Early Placenta Insulin-Like Peptide (INSL4) belongs to the insulin family. INSL4 is expressed in the early placental cytotrophoblast and syncytiotrophoblast. INSL4 is a secreted protein and a precursor that undergoes post-translational cleavage to produce 3 polypeptide chains, A-C, that form tertiary structures composed of either all three chains, or just the A and B chains. INSL4 plays an important role in the development of trophoblast and in the regulation of bone formation.

For Research Use Only