

## MUC2 Polyclonal Antibody

**catalog number: E-AB-70212**

**Note:** Centrifuge before opening to ensure complete recovery of vial contents.

### Description

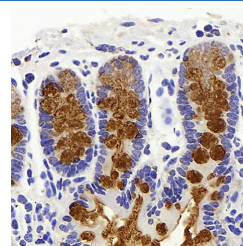
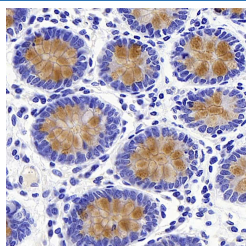
<b>Reactivity</b>	Human;Mouse;Rat
<b>Immunogen</b>	KLH conjugated Synthetic peptide corresponding to Mouse Muc2
<b>Host</b>	Rabbit
<b>Isotype</b>	IgG
<b>Purification</b>	Affinity purification
<b>Buffer</b>	Phosphate buffered solution, pH 7.4, containing 0.05% stabilizer, 1% protein protectant and 50% glycerol.

### Applications

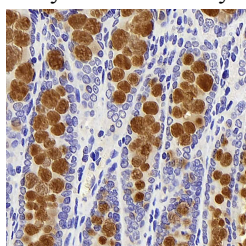
### Recommended Dilution

<b>IHC</b>	1:500-1:2000
------------	--------------

### Data



Immunohistochemistry analysis of paraffin-embedded human colon using MUC2 Polyclonal Antibody at dilution of 1:600. Immunohistochemistry analysis of paraffin-embedded mouse colon using MUC2 Polyclonal Antibody at dilution of 1:600.



Immunohistochemistry analysis of paraffin-embedded rat colon using MUC2 Polyclonal Antibody at dilution of 1:600.

### Preparation & Storage

<b>Storage</b>	Store at -20°C Valid for 12 months. Avoid freeze / thaw cycles.
<b>Shipping</b>	The product is shipped with ice pack, upon receipt, store it immediately at the temperature recommended.

### Background

This gene encodes a member of the mucin protein family. Mucins are high molecular weight glycoproteins produced by many epithelial tissues. The protein encoded by this gene is secreted and forms an insoluble mucous barrier that protects the gut lumen. The protein polymerizes into a gel of which 80% is composed of oligosaccharide side chains by weight. The protein features a central domain containing tandem repeats rich in threonine and proline that varies between 50 and 115 copies in different individuals. Alternatively spliced transcript variants of this gene have been described, but their full-length nature is not known.

### For Research Use Only