

Recombinant Mouse IL-2RG/CD132 Protein (Fc Tag)

Catalog Number: PKSM041318

Note: Centrifuge before opening to ensure complete recovery of vial contents.

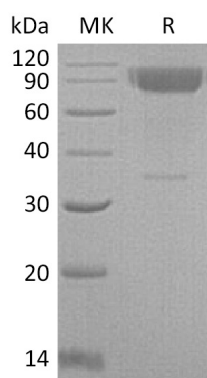
Description

| | |
|----------------------|---|
| Species | Mouse |
| Source | HEK293 Cells-derived Mouse IL-2RG/CD132 protein Ser25-Ala263, with an C-terminal Fc |
| Calculated MW | 55.1 kDa |
| Observed MW | 80-100 kDa |
| Accession | Q3UPA9 |
| Bio-activity | Not validated for activity |

Properties

| | |
|-----------------------|--|
| Purity | > 95 % as determined by reducing SDS-PAGE. |
| Endotoxin | < 1.0 EU per µg of the protein as determined by the LAL method. |
| Storage | Generally, lyophilized proteins are stable for up to 12 months when stored at -20 to -80 °C. Reconstituted protein solution can be stored at 4-8°C for 2-7 days. Aliquots of reconstituted samples are stable at < -20°C for 3 months. |
| Shipping | This product is provided as lyophilized powder which is shipped with ice packs. |
| Formulation | Lyophilized from a 0.2 µm filtered solution of PBS, pH 7.4. Normally 5% - 8% trehalose, mannitol and 0.01% Tween 80 are added as protectants before lyophilization. |
| Reconstitution | Please refer to the specific buffer information in the printed manual. Please refer to the printed manual for detailed information. |

Data



Background

The Interleukin-2 receptor gamma chain (IL-2 R γ , CD132) of the high affinity functional mouse IL-2 receptor complex is a member the hematopoietin receptor family. It is expressed on most lymphocyte (white blood cell) populations, and its gene is found on the X-chromosome of mammals. Common IL2 receptor- γ Chain is required for IL-2 receptor signaling. Besides IL-2, the Common IL2 receptor- γ chain has been shown to be a component of the functional receptor complexes for IL-4, IL-7, IL-9 and IL-15. It is a component of multiple cytokine receptors that are essential for lymphocyte development and function. Common IL2 receptor- γ Chain is also designated the common gamma chain.

For Research Use Only