

## Recombinant Human S100P/S100E Protein (His Tag)

**Catalog Number:** PKSH033009

**Note:** Centrifuge before opening to ensure complete recovery of vial contents.

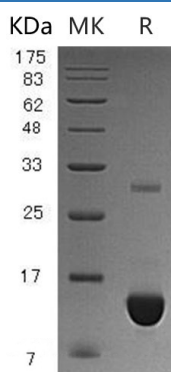
### Description

<b>Species</b>	Human
<b>Source</b>	E.coli-derived Human S100P;S100E protein Met 1-Lys95, with an N-terminal His
<b>Calculated MW</b>	12.6 kDa
<b>Observed MW</b>	12 kDa
<b>Accession</b>	P25815
<b>Bio-activity</b>	Not validated for activity

### Properties

<b>Purity</b>	> 95 % as determined by reducing SDS-PAGE.
<b>Concentration</b>	Subject to label value.
<b>Endotoxin</b>	< 1.0 EU per µg of the protein as determined by the LAL method.
<b>Storage</b>	Store at < -20°C, stable for 6 months. Please minimize freeze-thaw cycles.
<b>Shipping</b>	This product is provided as liquid. It is shipped at frozen temperature with blue ice/gel packs. Upon receipt, store it immediately at < - 20°C.
<b>Formulation</b>	Supplied as a 0.2 µm filtered solution of 20mM Tris-HCl, 1mM DTT, 100mM NaCl, 20% Glycerol, pH 8.0.

### Data



> 95 % as determined by reducing SDS-PAGE.

### Background

Protein S100-P (S100P) belongs to the S100 family of Calcium-Binding Proteins. S100P is 95 amino acids in length and it contains 2 EF-Hand Calcium-Binding Motifs. The EF-Hand Motif binds calcium; which likely alters molecular conformation. S100 proteins are localized in the cytoplasm and/or nucleus of a wide range of cells and it is involved in the regulation of a number of cellular processes such as cell cycle progression and differentiation. In addition to binding Ca; S100P also binds Zn and Mg; and may play a role in the etiology of prostate cancer.