

SRSF6 Polyclonal Antibody

catalog number: **E-AB-90902**

Note: Centrifuge before opening to ensure complete recovery of vial contents.

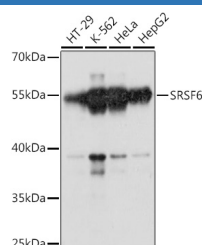
Description

Reactivity	Human;Mouse;Rat
Immunogen	A synthetic peptide of human SRSF6
Host	Rabbit
Isotype	IgG
Purification	Affinity purification
Buffer	Phosphate buffered solution, pH 7.4, containing 0.05% stabilizer and 50% glycerol.

Applications Recommended Dilution

WB	1:500-1:2000
-----------	--------------

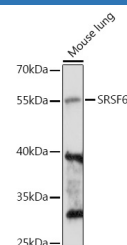
Data



Western blot analysis of extracts of various cell lines using SRSF6 Polyclonal Antibody at 1:1000 dilution.

Observed-MW:55 kDa

Calculated-MW:15 kDa/38 kDa/39 kDa



Western blot analysis of extracts of Mouse lung using SRSF6 Polyclonal Antibody at 1:1000 dilution.

Observed-MW:55 kDa

Calculated-MW:15 kDa/38 kDa/39 kDa

Preparation & Storage

Storage	Store at -20°C Valid for 12 months. Avoid freeze / thaw cycles.
Shipping	The product is shipped with ice pack, upon receipt, store it immediately at the temperature recommended.

Background

The protein encoded by this gene is involved in mRNA splicing and may play a role in the determination of alternative splicing. The encoded nuclear protein belongs to the splicing factor SR family and has been shown to bind with and modulate another member of the family, SFRS12. Alternative splicing results in multiple transcript variants. In addition, two pseudogenes, one on chromosome 17 and the other on the X chromosome, have been found for this gene.

For Research Use Only