

## Recombinant Porcine HAVCR1 Protein(hIgG1 Fc Tag)

**Catalog Number: PDMP100005**

**Note:** Centrifuge before opening to ensure complete recovery of vial contents.

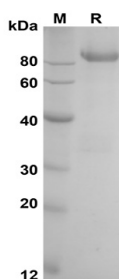
### Description

<b>Species</b>	Porcine
<b>Source</b>	Mammalian-derived porcine HAVCR1 protein Tyr21-Val281, with an C-terminal hIgG1 Fc
<b>Calculated MW</b>	53.6 kDa
<b>Observed MW</b>	80-110 kDa
<b>Accession</b>	C8CLK5
<b>Bio-activity</b>	Not validated for activity

### Properties

<b>Purity</b>	> 95% as determined by reducing SDS-PAGE.
<b>Endotoxin</b>	< 1.0 EU/mg of the protein as determined by the LAL method
<b>Storage</b>	Generally, lyophilized proteins are stable for up to 12 months when stored at -20 to -80 °C. Reconstituted protein solution can be stored at 4-8°C for 2-7 days. Aliquots of reconstituted samples are stable at < -20°C for 3 months.
<b>Shipping</b>	This product is provided as lyophilized powder which is shipped with ice packs.
<b>Formulation</b>	Lyophilized from a 0.2 µm filtered solution in PBS with 5% Trehalose and 5% Mannitol.
<b>Reconstitution</b>	It is recommended that sterile water be added to the vial to prepare a stock solution of 0.5 mg/mL. Concentration is measured by UV-Vis.

### Data



SDS-PAGE analysis of porcine HAVCR1 proteins, 2µg/lane of Recombinant porcine HAVCR1 proteins was resolved with SDS-PAGE under reducing conditions, showing bands at 80-110 kDa

### Background

### For Research Use Only

Toll-free: 1-888-852-8623  
Web: [www.elabscience.com](http://www.elabscience.com)

Tel: 1-832-243-6086  
Email: [techsupport@elabscience.com](mailto:techsupport@elabscience.com)

Fax: 1-832-243-6017

Rev. V1.1

HAV cellular receptor 1 (HAVCR1), also known as Kidney injury molecule 1 (KIM-1) and T cell immunoglobulin mucin 1 (TIM-1), is a type of integral membrane glycoprotein. KIM-1 protein is widely expressed with the highest levels in the kidney and testis. It has been shown to play a major role as a human susceptibility gene for asthma, allergy, and autoimmunity. IgA1 lambda is a specific ligand of KIM-1 protein and that their association has a synergistic effect in virus-receptor interactions. KIM-1 involves in the pathogenesis of acute kidney injury. It had been confirmed that KIM-1 is a human urinary renal dysfunction biomarker. Moreover, KIM-1 protein is a novel regulatory molecule of flow-induced calcium signaling.