

Recombinant Mouse EPO Protein(Trx Tag)

Catalog Number: PDEM100132



Note: Centrifuge before opening to ensure complete recovery of vial contents.

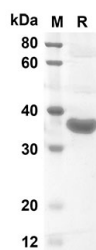
Description

Species	Mouse
Source	E.coli-derived Mouse EPO protein Ala27-Arg192, with an N-terminal Trx
Mol_Mass	38 kDa
Accession	P07321
Bio-activity	Not validated for activity

Properties

Purity	> 90% as determined by reducing SDS-PAGE.
Endotoxin	< 10 EU/mg of the protein as determined by the LAL method
Storage	Generally, lyophilized proteins are stable for up to 12 months when stored at -20 to -80 °C. Reconstituted protein solution can be stored at 4-8°C for 2-7 days. Aliquots of reconstituted samples are stable at < -20°C for 3 months.
Shipping	This product is provided as lyophilized powder which is shipped with ice packs.
Formulation	Lyophilized from a 0.2 µm filtered solution in PBS with 5% Trehalose and 5% Mannitol.
Reconstitution	It is recommended that sterile water be added to the vial to prepare a stock solution of 0.5 mg/mL. Concentration is measured by UV-Vis.

Data



SDS-PAGE analysis of Mouse EPO proteins, 2 µg/lane of Recombinant Mouse EPO proteins was resolved with an SDS-PAGE under reducing conditions, showing bands at 38

KD

Background

For Research Use Only

A Reliable Research Partner in Life Science and Medicine
Tel:400-999-2100

Email:techsupport@elabscience.cn

Web:www.elabscience.cn

Rev. V1.6

Recombinant Mouse EPO Protein(Trx Tag)

Catalog Number: PDEM100132



Erythropoietin is a member of the EPO / TPO family. It is a secreted, glycosylated cytokine composed of four alpha helical bundles. Erythropoietin can be found in the plasma and regulates red cell production by promoting erythroid differentiation and initiating hemoglobin synthesis. It also has neuroprotective activity against a variety of potential brain injuries and antiapoptotic functions in several tissue types. Erythropoietin is the principal hormone involved in the regulation of erythrocyte differentiation and the maintenance of a physiological level of circulating erythrocyte mass. It is produced by kidney or liver of adult mammals and by liver of fetal or neonatal mammals. Genetic variation in erythropoietin is associated with an susceptibility to microvascular complications of diabetes type 2. These are pathological conditions that develop in numerous tissues and organs as a consequence of diabetes mellitus. They include diabetic retinopathy, diabetic nephropathy leading to end-stage renal disease, and diabetic neuropathy. Diabetic retinopathy remains the major cause of new-onset blindness among diabetic adults. It is characterized by vascular permeability and increased tissue ischemia and angiogenesis. It has a longer circulating half-life in vivo. Erythropoietin is being much misused as a performance-enhancing drug in endurance athletes.

For Research Use Only

A Reliable Research Partner in Life Science and Medicine
Tel:400-999-2100

Email:techsupport@elabscience.cn

Web:www.elabscience.cn

Rev. V1.6