

Recombinant Human LGALSL Protein (His Tag)

Catalog Number: PKSH032477

Note: Centrifuge before opening to ensure complete recovery of vial contents.

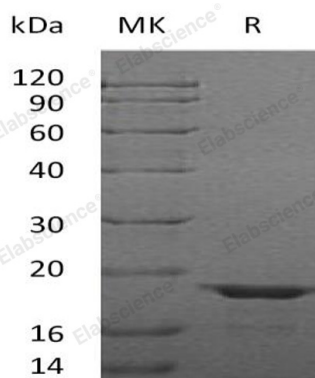
Description

Species	Human
Source	E.coli-derived Human LGALSL protein Ala2-Ser172, with an C-terminal His
Calculated MW	20.0 kDa
Observed MW	18 kDa
Accession	Q3ZCW2
Bio-activity	Not validated for activity

Properties

Purity	> 95 % as determined by reducing SDS-PAGE.
Concentration	Subject to label value.
Endotoxin	< 1.0 EU per µg of the protein as determined by the LAL method.
Storage	Store at < -20°C, stable for 6 months. Please minimize freeze-thaw cycles.
Shipping	This product is provided as liquid. It is shipped at frozen temperature with blue ice/gel packs. Upon receipt, store it immediately at < - 20°C.
Formulation	Supplied as a 0.2 µm filtered solution of 20mM Tris-HCl, 100mM NaCl, pH 8.0.

Data



> 95 % as determined by reducing SDS-PAGE.

Background

Galectin-Related Protein (LGALSL) is a 172 amino acid protein that contains one Galectin domain. LGALSL does not appear to bind carbohydrates or lactose as the critical residues required for binding are not conserved. LGALSL may play a significant role in stimulating smooth muscle growth in developing alveolar wall vessels and the development of pulmonary capillaries.

For Research Use Only

Toll-free: 1-888-852-8623
Web: www.elabscience.com

Tel: 1-832-243-6086
Email: techsupport@elabscience.com

Fax: 1-832-243-6017