

## PE Anti-Mouse CD226 Antibody[480.1]

**Catalog Number:** E-AB-F1419D

**Note:** Centrifuge before opening to ensure complete recovery of vial contents.

### Description

<b>Reactivity</b>	Mouse
<b>Host</b>	Rat
<b>Isotype</b>	Rat IgG2a, κ
<b>Clone No.</b>	480.1
<b>Isotype Control</b>	PE Rat IgG2a, κ Isotype Control[2A3] [Product E-AB-F09832D]
<b>Conjugation</b>	PE
<b>Conjugation Information</b>	PE is designed to be excited by the Blue (488 nm), Green (532 nm) and Yellow-Green (561 nm) lasers and detected using an optical filter centered near 575 nm (e.g., a 585/42 nm bandpass filter).
<b>Storage Buffer</b>	Phosphate buffered solution, pH 7.2, containing 0.09% stabilizer and 1% protein protectant.

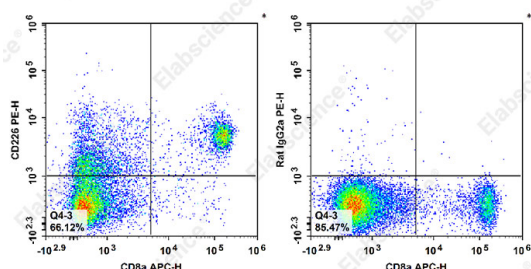
### Applications

### Recommended usage

#### FCM

Each lot of this antibody is quality control tested by flow cytometric analysis. **The amount of the reagent is suggested to be used 5 µL of antibody per test (million cells in 100 µL staining volume or per 100 µL of whole blood).** Please check your vial before the experiment. Since applications vary, the appropriate dilutions must be determined for individual use.

### Data



Staining of C57BL/6 murine splenocytes cells with APC Anti-Mouse CD8a Antibody and PE Anti-Mouse CD226 Antibody[480.1] (left) or PE Rat IgG2a, κ Isotype Control (right). Total viable cells were used for analysis.

### Preparation & Storage

<b>Storage</b>	Keep as concentrated solution. This product can be stored at 2-8°C for 12 months. Please protected from prolonged exposure to light and do not freeze.
<b>Shipping</b>	Ice bag

### Antigen Information

<b>Uniprot ID</b>	Q8K4F0
<b>Gene ID</b>	225825

### For Research Use Only

**Background**

CD226 (DNAM-1) is constitutively expressed on native CD8+ cells and on some CD4+ T cells, macrophages and NK cells. CD226 is involved in NK and T cell mediated cytotoxicity against certain tumors. CD155 and CD112 are the ligands for CD226. This antibody (480.1) is reported by the developer to partially block the binding of mouse CD155.

**For Research Use Only**