

Recombinant Human LMIR2/CD300C Protein (Fc Tag)



Catalog Number: PKSH032702

Note: Centrifuge before opening to ensure complete recovery of vial contents.

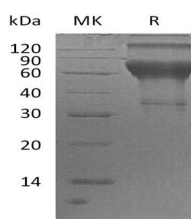
Description

Synonyms	CMRF35-Like Molecule 6; CLM-6; CD300 Antigen-Like Family Member C; CMRF35-A1; CMRF-35; Immunoglobulin Superfamily Member 16; IgSF16; CD300c; CD300C; CMRF35; CMRF35A; CMRF35A1; IGSF16
Species	Human
Expression Host	HEK293 Cells
Sequence	Gly21-Arg183
Accession	Q08708
Calculated Molecular Weight	44.9 kDa
Observed molecular weight	60-90 kDa
Tag	C-Fc

Properties

Purity	> 90 % as determined by reducing SDS-PAGE.
Endotoxin	< 1.0 EU per µg of the protein as determined by the LAL method.
Storage	Generally, lyophilized proteins are stable for up to 12 months when stored at -20 to -80°C. Reconstituted protein solution can be stored at 4-8°C for 2-7 days. Aliquots of reconstituted samples are stable at < -20°C for 3 months.
Shipping	This product is provided as lyophilized powder which is shipped with ice packs.
Formulation	Lyophilized from a 0.2 µm filtered solution of 20mM PB, 150mM NaCl, pH 7.4. Normally 5 % - 8 % trehalose, mannitol and 0.01% Tween80 are added as protectants before lyophilization. Please refer to the specific buffer information in the printed manual
Reconstitution	Please refer to the printed manual for detailed information.

Data



> 90 % as determined by reducing SDS-PAGE.

Background

CD300C is a single-pass type I membrane protein which belongs to the immunoregulatory signaling (IRS) family. CD300C contains one Ig-like V-type domain and is present on the surface of natural killer cells; granulocytes; most myeloid cells; dendritic cells; and a subpopulation of T and B lymphocytes. The CD300C (CMRF-35A) and CD300A (CMRF-35H) molecules are homologous leukocyte surface proteins. CD300a and CD300C play an important role in the cross-regulation of TNF-alpha and IFN-alpha secretion from pDCs. CD300A and CD300C are indistinguishable on the surface of NK cells. The ligand for CD300C is presently unknown.

For Research Use Only

A Reliable Research Partner in Life Science and Medicine

Toll-free: 1-888-852-8623

Web: www.elabscience.com

Tel: 1-832-243-6086

Email: techsupport@elabscience.com

Fax: 1-832-243-6017