

Recombinant BPIFB1/LPLUNC1 Monoclonal Antibody

catalog number: AN300438P

Note: Centrifuge before opening to ensure complete recovery of vial contents.

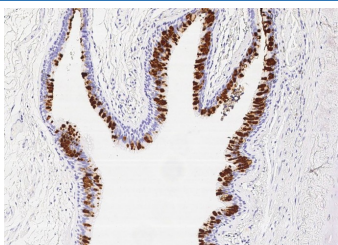
Description

Reactivity	Human
Immunogen	Recombinant Human BPIFB1/LPLUNC1 Protein
Host	Rabbit
Isotype	IgG
Clone	5B6
Purification	Protein A
Buffer	0.2 µm filtered solution in PBS

Applications Recommended Dilution

IHC-P	1:100-1:500
--------------	-------------

Data



Immunohistochemistry of paraffin-embedded human trachea using BPIFB1/LPLUNC1 Monoclonal Antibody at dilution of 1:200.

Preparation & Storage

Storage	This antibody can be stored at 2°C-8°C for one month without detectable loss of activity. Antibody products are stable for twelve months from date of receipt when stored at -20°C to -80°C. Preservative-Free. Avoid repeated freeze-thaw cycles.
Shipping	Ice bag

Background

BPIFB1, also known as LPLUNC1, belongs to the BPI/LBP/Plunc superfamily, plunc family. BPIFB1 may be involved in the innate immune response to bacterial exposure in the mouth, nasal cavities, and lungs. BPIFB1 is expressed in the upper respiratory tract and oral cavity, which may function in host defence. The expression of BPIF proteins is associated with CF lung disease in humans and mice. It is unclear if this elevation of protein production, which results from phenotypic alteration of the cells within the diseased epithelium, plays a role in the pathogenesis of the disease. BPIFB1 is an abundant, secreted product of goblet cells and minor mucosal glands of the respiratory tract and oral cavity and suggest that the protein functions in the complex milieu that protects the mucosal surfaces in these locations.

For Research Use Only

Toll-free: 1-888-852-8623
Web: www.elabscience.com

Tel: 1-832-243-6086
Email: techsupport@elabscience.com

Fax: 1-832-243-6017

Rev. V1.0