

## Recombinant Rat IL-2 Protein(GST Tag)

Catalog Number: PDER100142

**Note:** Centrifuge before opening to ensure complete recovery of vial contents.

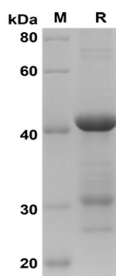
### Description

<b>Species</b>	Rat
<b>Source</b>	E.coli-derived Rat IL-2 protein Ala21-Gln155, with an N-terminal GST
<b>Mol_Mass</b>	40.8 kDa
<b>Accession</b>	P17108
<b>Bio-activity</b>	Not validated for activity

### Properties

<b>Purity</b>	> 90% as determined by reducing SDS-PAGE.
<b>Endotoxin</b>	< 10 EU/mg of the protein as determined by the LAL method
<b>Storage</b>	Generally, lyophilized proteins are stable for up to 12 months when stored at -20 to -80 °C. Reconstituted protein solution can be stored at 4-8°C for 2-7 days. Aliquots of reconstituted samples are stable at < -20°C for 3 months.
<b>Shipping</b>	This product is provided as lyophilized powder which is shipped with ice packs.
<b>Formulation</b>	Lyophilized from a 0.2 µm filtered solution in PBS with 5% Trehalose and 5% Mannitol.
<b>Reconstitution</b>	It is recommended that sterile water be added to the vial to prepare a stock solution of 0.5 mg/mL. Concentration is measured by UV-Vis

### Data



SDS-PAGE analysis of Rat IL-2 proteins, 2µg/lane of Recombinant Rat IL-2 proteins was resolved with SDS-PAGE under reducing conditions, showing bands at 42 KD

### Background

IL-2 (Interleukin 2) is a critical cytokine in T cell biology. It promotes T cell activation and expansion, the development, maintenance and function of regulatory T cells (Treg), and the differentiation of CD8+ T cells into terminal effector cells and memory cells. IL-2 signals through a receptor complex composed of CD25/IL-2 R alpha, IL-2 R beta, and the Common gamma Chain (gamma c). IL-2 R beta is also a component of the IL-15 receptor complex. Gamma c is also a signaling subunit in the receptors for IL-4, -7, -9, -15, and -21.

### For Research Use Only