

## Calpain 2 Polyclonal Antibody

**catalog number: E-AB-92482**

**Note:** Centrifuge before opening to ensure complete recovery of vial contents.

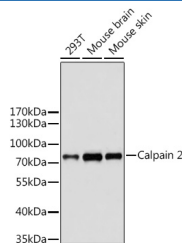
### Description

<b>Reactivity</b>	Human;Mouse;Rat
<b>Immunogen</b>	Recombinant fusion protein of human Calpain 2
<b>Host</b>	Rabbit
<b>Isotype</b>	IgG
<b>Purification</b>	Affinity purification
<b>Buffer</b>	Phosphate buffered solution, pH 7.4, containing 0.05% stabilizer and 50% glycerol.

### Applications

<b>WB</b>	1:200-1:1000
<b>IHC</b>	1:50-1:200

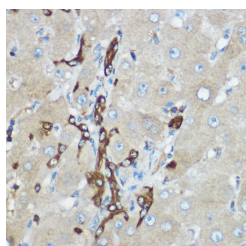
### Data



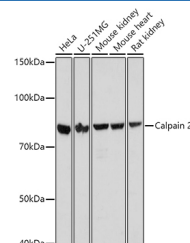
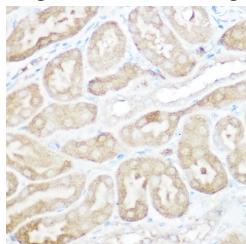
Western blot analysis of extracts of various cell lines using Calpain 2 Polyclonal Antibody

**Observed-MW:80 kDa**

**Calculated-MW:71 kDa/79 kDa**



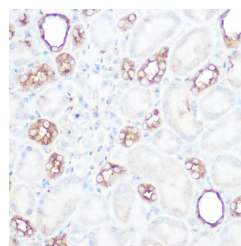
Immunohistochemistry of paraffin-embedded human liver using [KO Validated] Calpain 2 Polyclonal Antibody at dilution of 1:100 (40x lens). Perform high pressure antigen retrieval with 10 mM citrate buffer pH 6.0 before commencing with IHC staining protocol.



Western blot analysis of extracts of various cell lines using Calpain 2 Polyclonal Antibody at 1:1000 dilution.

**Observed-MW:80 kDa**

**Calculated-MW:71 kDa/79 kDa**



Immunohistochemistry of paraffin-embedded mouse kidney using [KO Validated] Calpain 2 Polyclonal Antibody at dilution of 1:100 (40x lens). Perform high pressure antigen retrieval with 10 mM citrate buffer pH 6.0 before commencing with IHC staining protocol

### For Research Use Only

Immunohistochemistry of paraffin-embedded rat kidney using [KO Validated] Calpain 2 Polyclonal Antibody at dilution of 1:100 (40x lens). Perform high pressure antigen retrieval with 10 mM citrate buffer pH 6.0 before commencing with IHC staining protocol.

## Preparation & Storage

**Storage**

Store at -20°C Valid for 12 months. Avoid freeze / thaw cycles.

**Shipping**

The product is shipped with ice pack, upon receipt, store it immediately at the temperature recommended.

## Background

The calpains, calcium-activated neutral proteases, are nonlysosomal, intracellular cysteine proteases. The mammalian calpains include ubiquitous, stomach-specific, and muscle-specific proteins. The ubiquitous enzymes consist of heterodimers with distinct large, catalytic subunits associated with a common small, regulatory subunit. This gene encodes the large subunit of the ubiquitous enzyme, calpain 2. Multiple heterogeneous transcriptional start sites in the 5' UTR have been reported. Two transcript variants encoding different isoforms have been found for this gene.

## For Research Use Only