

Recombinant S100A4 Monoclonal Antibody

catalog number: **E-AB-81606**

Note: Centrifuge before opening to ensure complete recovery of vial contents.

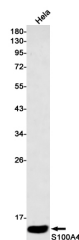
Description

Reactivity	Human
Immunogen	A synthetic peptide of human S100A4
Host	Rabbit
Isotype	IgG
Clone	R01-7H1
Purification	Affinity Purified
Buffer	50mM Tris-Glycine(pH 7.4), 0.15M NaCl, 40% Glycerol, 0.05% stabilizer and 0.05% protective protein.

Applications

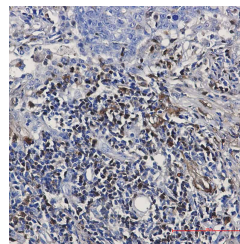
Applications	Recommended Dilution
WB	1:1000-1:2000
IHC	1:50-1:100

Data

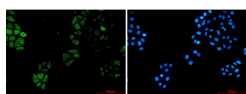


Western blot detection of S100A4 in Hela cell lysates using S100A4 Rabbit mAb(1:500 diluted). Predicted band size: 12kDa. Observed band size: 12kDa.

Observed-MW:12 kDa
Calculated-MW:12 kDa



Immunohistochemistry of S100A4 in paraffin-embedded Human lung cancer tissue using S100A4 Rabbit mAb at dilution 1:50



Immunofluorescence of S1A4 (green) in hela using S1A4 Rabbit mAb at dilution 1/5, and DAPI(blue)

Preparation & Storage

Storage	Store at -20°C Valid for 12 months. Avoid freeze / thaw cycles.
Shipping	The product is shipped with ice pack, upon receipt, store it immediately at the temperature recommended.

Background

For Research Use Only

S100A4 is a member of the S100 family of calcium-binding proteins. The S100 family members have been involved in the regulation of a number of cellular processes such as cell cycle progression and differentiation. S100A4 is known to localize to and function in the nucleus, cytoplasm of cells and the extracellular space. S100A4 has also been shown to be associated with tumor growth, motility, invasion, metastasis, angiogenesis, apoptosis and chemoresistance. It is a fibroblast-specific protein associated with mesenchymal cell morphology and motility, is expressed during epithelial-mesenchymal transformations (EMT) in vivo. It is an improved marker for lung fibroblasts that could be useful for investigating the pathogenesis of pulmonary fibrosis. Overexpression of S100A4 is correlated with a worse prognosis in patients with various types of cancer.

For Research Use Only

Toll-free: 1-888-852-8623
Web: www.elabscience.com

Tel: 1-832-243-6086
Email: techsupport@elabscience.com

Fax: 1-832-243-6017

Rev. V1.7