

Gsdmc3 Polyclonal Antibody

Catalog Number: E-AB-93165



Note: Centrifuge before opening to ensure complete recovery of vial contents.

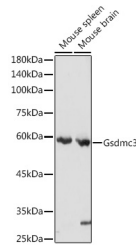
Description

Reactivity	Human, Mouse, Rat
Immunogen	Recombinant fusion protein of mouse Gsdmc3
Host	Rabbit
Isotype	IgG
Purification	Affinity purification
Conjugation	Unconjugated
Formulation	PBS with 0.01% thiomersal, 50% glycerol, pH7.3.

Applications Recommended Dilution

WB	1:500-1:2000
-----------	--------------

Data



Western blot analysis of extracts of various cell lines using Gsdmc3 Polyclonal Antibody at 1:3000 dilution.

Observed MW: 54KDa
Calculated Mw: 54kDa

Preparation & Storage

Storage Store at -20°C. Avoid freeze/thaw cycles.

Background

Predicted to enable phosphatidylinositol-4,5-bisphosphate binding activity; phosphatidylinositol-4-phosphate binding activity; and phosphatidylserine binding activity. Predicted to be involved in defense response to bacterium and pyroptosis. Predicted to act upstream of or within programmed cell death. Predicted to be located in cytoplasm. Is expressed in gut and metanephros. Orthologous to human GSDMC (gasdermin C).

For Research Use Only

A Reliable Research Partner in Life Science and Medicine

Toll-free: 1-888-852-8623

Web: www.elabscience.com

Tel: 1-832-243-6086

Email: techsupport@elabscience.com

Fax: 1-832-243-6017