

Recombinant Human Prolactin/PRL Protein (His Tag)



Catalog Number: PKSH032930

Note: Centrifuge before opening to ensure complete recovery of vial contents.

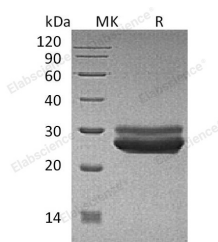
Description

Synonyms	Prolactin;PRL
Species	Human
Expression Host	HEK293 Cells
Sequence	Leu29-Cys227
Accession	P01236
Calculated Molecular Weight	23.9 kDa
Observed molecular weight	25-30 kDa
Tag	C-His

Properties

Purity	> 95 % as determined by reducing SDS-PAGE.
Endotoxin	< 1.0 EU per µg of the protein as determined by the LAL method.
Storage	Generally, lyophilized proteins are stable for up to 12 months when stored at -20 to -80°C. Reconstituted protein solution can be stored at 4-8°C for 2-7 days. Aliquots of reconstituted samples are stable at < -20°C for 3 months.
Shipping	This product is provided as lyophilized powder which is shipped with ice packs.
Formulation	Lyophilized from a 0.2 µm filtered solution of 20mM PB, 150mM NaCl, 5% Trehalose, 5% Mannitol, 0.01% Tween80, pH 7.4. Normally 5 % - 8 % trehalose, mannitol and 0.01% Tween80 are added as protectants before lyophilization. Please refer to the spec
Reconstitution	Please refer to the printed manual for detailed information.

Data



> 95 % as determined by reducing SDS-PAGE.

Background

Prolactin (PRL) is a secreted neuroendocrine pituitary hormone that acts primarily on the mammary gland to promote lactation; but has pleiotropic effects in both males and females. Non-glycosylated prolactin is produced by the pituitary and packaged in storage granules before secretion; while glycosylated prolactin is reported to be constitutively secreted; have lower biological potency; and be removed from the circulation more quickly. Prolactin is synthesized mainly by the anterior pituitary in all mammals; where secretion is under tonic inhibition by hypothalamic dopamine. In humans; prolactin is also produced peripherally. Prolactin expression is low during early human pregnancy; but increases in late pregnancy. The prolactin receptor (PRLR) is a transmembrane type I glycoprotein that belongs to the cytokine

For Research Use Only

A Reliable Research Partner in Life Science and Medicine

Toll-free: 1-888-852-8623

Web: www.elabscience.com

Tel: 1-832-243-6086

Email: techsupport@elabscience.com

Fax: 1-832-243-6017

Recombinant Human Prolactin/PRL Protein (His Tag)

Catalog Number: PKSH032930



hematopoietic receptor family. prolactin molecule is thought to bind two receptor molecules. In addition to its lactogenic activity; peripherally produced prolactin plays roles in breast and prostate cancer development; regulation of reproductive function; and immunoregulation.

For Research Use Only

A Reliable Research Partner in Life Science and Medicine

Toll-free: 1-888-852-8623

Tel: 1-832-243-6086

Fax: 1-832-243-6017

Web: www.elabscience.com

Email: techsupport@elabscience.com