

Connexin 47 Polyclonal Antibody

Catalog Number:E-AB-15578



Note: Centrifuge before opening to ensure complete recovery of vial contents.

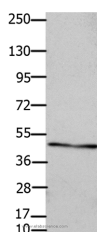
Description

Reactivity	Human ,Mouse ,Rat
Immunogen	Synthetic peptide of human GJC2
Host	Rabbit
Isotype	IgG
Purification	Affinity purification
Conjugation	Unconjugated
Formulation	PBS with 0.05% sodium azide and 50% glycerol, PH7.4

Applications Recommended Dilution

WB	1:500-1:2000
-----------	--------------

Data



Western Blot analysis of OP9 cell using Connexin 47
Polyclonal Antibody at dilution of 1:450

Observed Mw:Refer to figures

Calculated Mw:47kDa

Preparation & Storage

Storage Store at -20°C. Avoid freeze / thaw cycles.

Background

One gap junction consists of a cluster of closely packed pairs of transmembrane channels, the connexons, through which materials of low MW diffuse from one cell to a neighboring cell. May play a role in myelination in central and peripheral nervous systems.

For Research Use Only

A Reliable Research Partner in Life Science and Medicine

Toll-free: 1-888-852-8623

Web: www.elabscience.com

Tel: 1-832-243-6086

Email: techsupport@elabscience.com

Fax: 1-832-243-6017