

LYZL1 Polyclonal Antibody

catalog number: E-AB-52843

Note: Centrifuge before opening to ensure complete recovery of vial contents.

Description

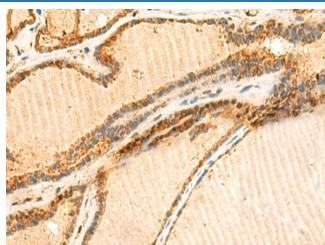
Reactivity	Human;Mouse
Immunogen	Fusion protein of human LYZL1
Host	Rabbit
Isotype	IgG
Purification	Antigen affinity purification
Conjugation	Unconjugated
buffer	Phosphate buffered solution, pH 7.4, containing 0.05% stabilizer and 50% glycerol.

Applications

Recommended Dilution

IHC	1:50-1:300
------------	------------

Data



Immunohistochemistry of paraffin-embedded Human thyroid cancer tissue using LYZL1 Polyclonal Antibody at dilution of 1:50($\times 200$)

Preparation & Storage

Storage	Store at -20°C Valid for 12 months. Avoid freeze / thaw cycles.
Shipping	The product is shipped with ice pack, upon receipt, store it immediately at the temperature recommended.

Background

The lysozyme family of proteins has an important role in host defense and is associated with the monocyte-macrophage system and enhances the activity of immunoagents. The mammalian lysozyme gene family is much larger than previously appreciated and consists of at least eight distinct genes scattered around the genome. C-type lysozymes are specifically involved catalyzing the hydrolysis of Beta-1,4 glycosidic bonds of the peptidoglycan of bacterial cell walls. As a homolog of human C-type lysozyme, LYZL1 is an intra-acrosomal, nonbacteriolytic, c lysozyme-like protein recently isolated from human spermatozoa.

For Research Use Only