

KHSRP Polyclonal Antibody

catalog number: **E-AB-18183**

Note: Centrifuge before opening to ensure complete recovery of vial contents.

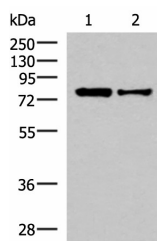
Description

Reactivity	Human;Mouse;Rat
Immunogen	Synthetic peptide of human KHSRP
Host	Rabbit
Isotype	IgG
Purification	Antigen affinity purification
Buffer	Phosphate buffered solution, pH 7.4, containing 0.05% stabilizer and 50% glycerol.

Applications

Applications	Recommended Dilution
WB	1:1000-1:5000
IHC	1:50-1:300

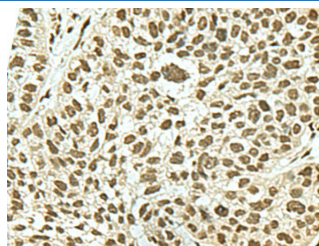
Data



Western blot analysis of HepG2 and Hela cell lysates using KHSRP Polyclonal Antibody at dilution of 1:1000

Observed-MW:Refer to figures

Calculated-MW:73 kDa



Immunohistochemistry of paraffin-embedded Human esophagus cancer tissue using KHSRP Polyclonal Antibody at dilution of 1:50(×200)

Preparation & Storage

Storage	Store at -20°C Valid for 12 months. Avoid freeze / thaw cycles.
Shipping	The product is shipped with ice pack, upon receipt, store it immediately at the temperature recommended.

Background

The KHSRP gene encodes a multifunctional RNA-binding protein implicated in a variety of cellular processes, including transcription, alternative pre-mRNA splicing, and mRNA localization. KHSRP (KH-Type Splicing Regulatory Protein) is a Protein Coding gene. Diseases associated with KHSRP include Ataxia, Cerebellar, Cayman Type. Among its related pathways are CDK-mediated phosphorylation and removal of Cdc6 and Gene Expression. GO annotations related to this gene include nucleic acid binding and RNA binding. An important paralog of this gene is FUBP1.

For Research Use Only