

## PE/Elab Fluor® 594 Anti-Mouse CD8a Antibody[53-6.7]

Catalog Number: E-AB-F1104P

**Note:** Centrifuge before opening to ensure complete recovery of vial contents.

### Description

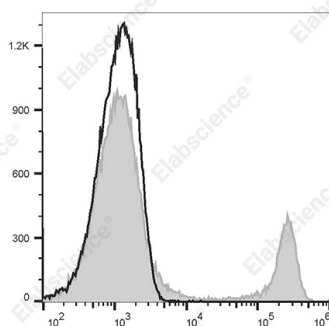
|                         |   |
|-------------------------|---|
| Reactivity              | Mouse   |
| Host                    | Rat   |
| Isotype                 | Rat IgG2a, $\kappa$   |
| Clone No.               | 53-6.7  |
| Isotype Control         | PE/Elab Fluor® 594 Rat IgG2a, $\kappa$ Isotype Control[2A3] [Product E-AB-F09832P]  |
| Conjugation             | PE/Elab Fluor® 594  |
| Conjugation Information | PE/Elab Fluor® 594 is designed to be excited by the blue (488 nm), Green (532 nm) and yellow-green (561 nm) lasers and detected using an optical filter centered near 620 nm (e.g., a 610/20 nm bandpass filter). |
| Storage Buffer          | Phosphate buffered solution, pH 7.2, containing 0.09% stabilizer and 1% protein protectant.   |

### Applications

### Recommended usage

|     |  |
|-----|--|
| FCM | Each lot of this antibody is quality control tested by flow cytometric analysis. <b>The amount of the reagent is suggested to be used 5 <math>\mu</math>L of antibody per test (million cells in 100 <math>\mu</math>L staining volume or per 100 <math>\mu</math>L of whole blood).</b> Please check your vial before the experiment. Since applications vary, the appropriate dilutions must be determined for individual use. |
|-----|--|

### Data



C57BL/6 murine splenocytes are stained with PE/Elab Fluor

® 594 Anti-Mouse CD8a Antibody[53-6.7] (filled gray

histogram) or PE/Elab Fluor® 594 Rat IgG2a,  $\kappa$  Isotype Control (empty black histogram).

### Preparation & Storage

|          |   |
|----------|---|
| Storage  | Keep as concentrated solution.<br>This product can be stored at 2-8°C for 12 months. Please protected from prolonged exposure to light and do not freeze. |
| Shipping | Ice bag   |

### Antigen Information

|                 |  |
|-----------------|--|
| Alternate Names | CD8A;MAL;T-cell surface glycoprotein CD8 alpha chain;T-lymphocyte differentiation antigen T8/Leu-2 |
|-----------------|--|

### For Research Use Only

Toll-free: 1-888-852-8623  
Web: [www.elabscience.com](http://www.elabscience.com)

Tel: 1-832-243-6086  
Email: [techsupport@elabscience.com](mailto:techsupport@elabscience.com)

Fax: 1-832-243-6017

Rev. V1.6

**Uniprot ID**

P01731

**Gene ID**

12525

**Background**

CD8, also known as Lyt-2, Ly-2, or T8, consists of disulfide-linked  $\alpha$  and  $\beta$  chains that form the  $\alpha$ (CD8a)/ $\beta$ (CD8b) heterodimer and  $\alpha/\alpha$  homodimer. CD8a is a 34 kD protein that belongs to the immunoglobulin family. The CD8  $\alpha/\beta$  heterodimer is expressed on the surface of most thymocytes and a subset of mature TCR  $\alpha/\beta$  T cells. CD8 expression on mature T cells is non-overlapping with CD4. The CD8  $\alpha/\alpha$  homodimer is expressed on a subset of  $\gamma/\delta$  TCR-bearing T cells, NK cells, intestinal intraepithelial lymphocytes, and lymphoid dendritic cells. CD8 is an antigen co-receptor on T cells that interacts with MHC class I on antigen-presenting cells or epithelial cells. CD8 promotes T cell activation through its association with the TCR complex and protein tyrosine kinase Lck.