

Recombinant Cdc25C Monoclonal Antibody

catalog number: **AN300697L**

Note: Centrifuge before opening to ensure complete recovery of vial contents.

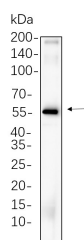
Description

| | |
|---------------------|---|
| Reactivity | Human;Rat |
| Immunogen | Recombinant Human Cdc25C protein |
| Host | Rabbit |
| Isotype | IgG, κ |
| Clone | B636 |
| Purification | Protein A |
| Buffer | PBS, 50% glycerol, 0.05% Proclin 300, 0.05% protein protectant. |

Applications Recommended Dilution

| | |
|--------------|----------------|
| IHC | 1:1000-1:4000 |
| WB | 1:2000-1:10000 |
| IF | 1:200-1:1000 |
| ELISA | 1:5000-1:20000 |
| IP | 1:50-1:200 |

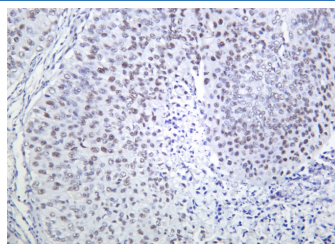
Data



Western Blot with Recombinant Cdc25C Monoclonal Antibody at dilution of 1:1000 dilution. Lane A: U-14 whole cell lysate.

Observed-MW:60 kDa

Calculated-MW:53 kDa



Immunohistochemistry of paraffin-embedded human bladder carcinoma using Recombinant Cdc25C Monoclonal Antibody at dilution of 1:200.

Preparation & Storage

| | |
|-----------------|---|
| Storage | Store at -20°C Valid for 12 months. Avoid freeze / thaw cycles. |
| Shipping | Ice bag |

Background

CDC25C(cell division cycle 25C) Homo sapiens This gene encodes a conserved protein that plays a key role in the regulation of cell division. The encoded protein directs dephosphorylation of cyclin B-bound CDC2 and triggers entry into mitosis. It also suppresses p53-induced growth arrest. Multiple alternatively spliced transcript variants of this gene have been described.

For Research Use Only

Toll-free: 1-888-852-8623
Web: www.elabscience.com

Tel: 1-832-243-6086
Email: techsupport@elabscience.com

Fax: 1-832-243-6017

Rev. V1.2