

GSK3 beta Polyclonal Antibody

catalog number: E-AB-70043

Note: Centrifuge before opening to ensure complete recovery of vial contents.

Description

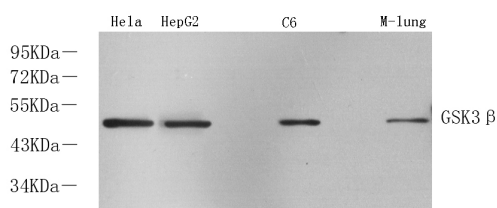
Reactivity	Human;Mouse;Rat
Immunogen	KLH conjugated Synthetic peptide corresponding to Mouse GSK3β
Host	Rabbit
Isotype	IgG
Purification	Affinity purification
Conjugation	Unconjugated
Buffer	Phosphate buffered solution, pH 7.4, containing 0.05% stabilizer, 1% protein protectant and 50% glycerol.

Applications

Recommended Dilution

WB	1:500-1:2000
IHC	1:300-1:800
IF	1:200-1:500

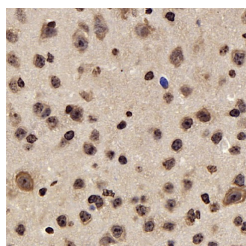
Data



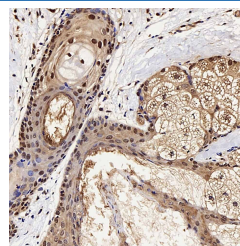
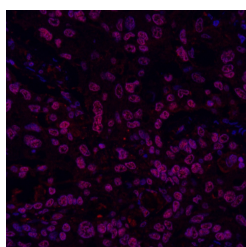
Western Blot analysis of various samples using GSK3 beta Polyclonal Antibody at dilution of 1:1000.

Observed-MW:47 kDa

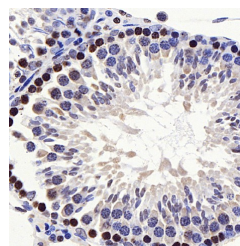
Calculated-MW:47 kDa



Immunohistochemistry analysis of paraffin-embedded mouse brain using GSK3 beta Polyclonal Antibody at dilution of 1:300.



Immunohistochemistry analysis of paraffin-embedded human ovary cancer using GSK3 beta Polyclonal Antibody at dilution of 1:300.



Immunohistochemistry analysis of paraffin-embedded rat testis using GSK3 beta Polyclonal Antibody at dilution of 1:300.

For Research Use Only

Immunofluorescence analysis of paraffin-embedded human liver cancer using GSK3 beta Polyclonal Antibody at dilution of 1:300.

Preparation & Storage

Storage

Store at -20°C Valid for 12 months. Avoid freeze / thaw cycles.

Shipping

The product is shipped with ice pack, upon receipt, store it immediately at the temperature recommended.

Background

The protein encoded by this gene is a serine-threonine kinase belonging to the glycogen synthase kinase subfamily. It is a negative regulator of glucose homeostasis and is involved in energy metabolism, inflammation, ER-stress, mitochondrial dysfunction, and apoptotic pathways. Defects in this gene have been associated with Parkinson disease and Alzheimer disease.