

Carboxypeptidase A2/CPA2 Monoclonal Antibody

catalog number: AN200178P

Note: Centrifuge before opening to ensure complete recovery of vial contents.

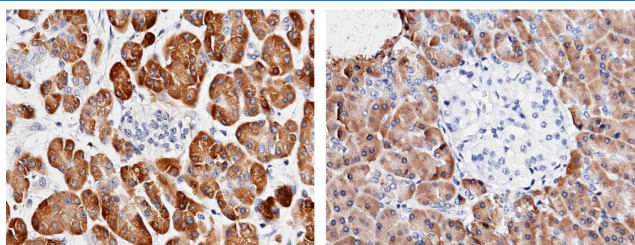
Description

Reactivity	Human
Immunogen	Recombinant Human Carboxypeptidase A2/CPA2 protein
Host	Mouse
Isotype	IgG2a
Clone	6G11
Purification	Protein A
Buffer	0.2 µm filtered solution in PBS

Applications Recommended Dilution

IHC-P	1:50-1:200
--------------	------------

Data



Immunohistochemistry of paraffin-embedded human pancreas (from 2 donors) using Carboxypeptidase A2/CPA2 Monoclonal Antibody at dilution of 1:60. Positive staining was localized to pancreatic acinus.

Preparation & Storage

Storage	This antibody can be stored at 2°C-8°C for one month without detectable loss of activity. Antibody products are stable for twelve months from date of receipt when stored at -20°C to -80°C. Preservative-Free. Avoid repeated freeze-thaw cycles.
Shipping	Ice bag

Background

Carboxypeptidase A2 (CPA2) is a secreted pancreatic procarboxy-peptidase, and cleaves the C-terminal amide or ester bond of peptides that have a free C-terminal carboxyl group. The hydrolytic action of CPA2 was identified with a preference towards long substrates with aromatic amino acids in their C-terminal end, particularly tryptophan. CPA2 comprises a signal peptide, a pro region and a mature chain, and can be activated after cleavage of the pro peptide. Three different forms of human pancreatic procarboxypeptidase A have been isolated, and the A1 and A2 forms are always secreted as monomeric proteins with different biochemical properties.

For Research Use Only