

## KLK15 Monoclonal Antibody

**catalog number: AN200129P**

**Note:** Centrifuge before opening to ensure complete recovery of vial contents.

### Description

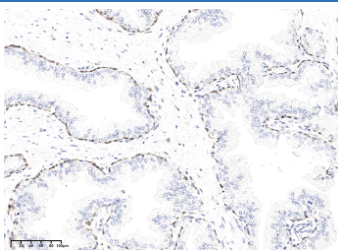
<b>Reactivity</b>	Human
<b>Immunogen</b>	Recombinant Human KLK15 Protein
<b>Host</b>	Mouse
<b>Isotype</b>	IgG1
<b>Clone</b>	10A7
<b>Purification</b>	Protein A
<b>Buffer</b>	0.2 µm filtered solution in PBS

### Applications

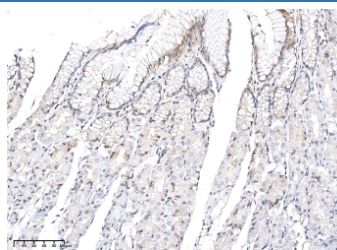
### Recommended Dilution

<b>IHC-P</b>	1:100-1:500
--------------	-------------

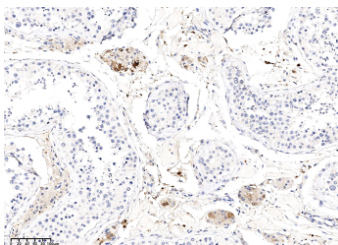
### Data



Immunohistochemistry of paraffin-embedded human prostate using KLK15 Monoclonal Antibody at dilution of 1:200.



Immunohistochemistry of paraffin-embedded human stomach using KLK15 Monoclonal Antibody at dilution of 1:200.



Immunohistochemistry of paraffin-embedded human testis using KLK15 Monoclonal Antibody at dilution of 1:200.

### Preparation & Storage

<b>Storage</b>	This antibody can be stored at 2°C-8°C for one month without detectable loss of activity. Antibody products are stable for twelve months from date of receipt when stored at -20°C to -80°C. Preservative-Free. Avoid repeated freeze-thaw cycles.
<b>Shipping</b>	Ice bag

### Background

### For Research Use Only

Kallikreins are a subgroup of serine proteases having diverse physiological functions. Growing evidence suggests that many kallikreins are implicated in carcinogenesis and some have potential as novel cancer and other disease biomarkers. This gene is one of the fifteen kallikrein subfamily members located in a cluster on chromosome 16. In prostate cancer, this gene has increased expression, which indicates its possible use as a diagnostic or prognostic marker for prostate cancer. The gene contains multiple polyadenylation sites and alternative splicing results in multiple transcript variants encoding distinct isoforms.