

Recombinant CD38 Monoclonal Antibody

catalog number: **AN300014P**

Note: Centrifuge before opening to ensure complete recovery of vial contents.

Description

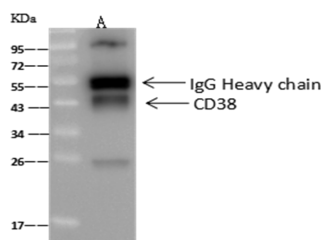
Reactivity	Human
Immunogen	Recombinant Human CD38 protein
Host	Rabbit
Isotype	IgG
Clone	3P11
Purification	Protein A
Buffer	0.2 µm filtered solution in PBS

Applications

Recommended Dilution

WB	1:2000-1:10000
IP	1-5 µL/mg of lysate

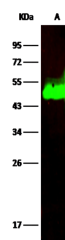
Data



Immunoprecipitation analysis using 4µL anti-CD38 Monoclonal Antibody and 60 µg of Immunomagnetic beads Protein A/G. Western blot was performed from the immunoprecipitate using CD38 Monoclonal Antibody at a dilution of 1:100. Lane A: 0.5 mg Jurkat Whole Cell Lysate

Observed-MW: 45 kDa

Calculated-MW: 34 kDa



Western Blot with CD38 Monoclonal Antibody at dilution of 1:1000. Lane A: Jurkat Whole Cell Lysate, Lysates/proteins at 30 µg per lane.

Observed-MW: 45 kDa

Calculated-MW: 34 kDa

Preparation & Storage

Storage	This antibody can be stored at 2°C-8°C for one month without detectable loss of activity. Antibody products are stable for twelve months from date of receipt when stored at -20°C to -80°C. Preservative-Free. Avoid repeated freeze-thaw cycles.
Shipping	Ice bag

Background

CD38, also known as ADP-ribosyl cyclase, is a Type II integral membrane protein. The enzyme is able to transform NA D(P)+ into three different products with calcium mobilizing ability, cyclic ADP-ribose, NAADP+, and ADP-ribose. CD38 is expressed in B and T lymphocytes, osteoclasts, and in cardiac, pancreatic, liver and kidney cells. Through its production of cyclic ADP-ribose, CD38 modulates calcium-mediated signal transduction in many types of cells, including neutrophils and pancreatic beta cells.

For Research Use Only