

EasySort™ Mouse Naïve CD4⁺T Cell Isolation Kit

Cat. No: MIM007N

Size: 10Assays/100Assays/200Assays

Component	Component Name	10 Assays	100 Assays	200 Assays	Storage
MIM007NA	EasySort™ Mouse Naïve CD4 ⁺ T Beads Streptavidin 1.0-N	90 µL	900 µL	900 µL×2	2-8°C
MIM007NB	EasySort™ Mouse Naïve CD4 ⁺ T Cell Isolation Cocktail	36 µL	360 µL	360 µL×2	2-8°C
	Manual			1 copy	

Storage

Store at 2-8°C with shading light for 1 year. Avoid freezing and thawing.

Detection Principle

Mouse Naïve CD4⁺T cell isolation is a negative selection method to isolate Naïve CD4⁺T cells from single cell suspensions of mouse spleen cells or other tissues. The principle is to use different biotinylated monoclonal antibodies to label non target cells (non-Naïve CD4⁺T cells), and then remove them by streptavidin-labelled magnetic beads, so the unstimulated primitive state Naïve CD4⁺T cells were isolated.

EasySort™ mouse Naïve CD4⁺T cell isolation kit is a product that can isolate high purity mouse Naïve CD4⁺T cells quickly and easily. The kit is suitable for isolation of Naïve CD4⁺T cells from mouse spleen and lymph nodes, and the isolated cells can be directly used for downstream applications.

Reagents and Materials Not Supplied

1. Reagents:

PBS, fetal bovine serum (FBS), EDTA

2. Materials:

Disposable sterile syringe, 70 µm mesh nylon strainer, ophthalmic scissors, ophthalmic forceps, 1.5 mL/2 mL EP tube, 15 mL centrifuge tube, flow tube

3. Instrument:

Optical microscope, centrifuge, 5 mL magnetic rack

For Research Use Only

Experimental Operation

NOTE: The following operations must be performed under sterile conditions

➤ Isolation buffer preparation

Add fetal bovine serum (final concentration of 2%) and EDTA (final concentration of 2 mM) to PBS buffer and filter the prepared buffer with 0.22 µm filter.

NOTE: Sealed store the prepared buffer at 4°C and use within 1 week. In addition, 2% fetal bovine serum can be replaced by 0.5% BSA.

➤ Mouse spleen single cell suspension preparation

- Take the fresh mouse spleen to avoid excessive connective tissue attached.
- Grind the spleen through a 70 µm mesh nylon strainer, rinse the cell sieve with pre-cooled PBS, and collect the cell suspension in a 15 mL centrifuge tube and centrifuge at 300 g for 5 min.
- Discard the supernatant, resuspend the splenocytes with isolation buffer, and filter the cells through a 70 µm mesh nylon strainer, then count the cells. Adjust the cell density to 2×10^8 cells/mL.

Note: Generally, about $2-4 \times 10^8$ splenocytes can be obtained from each mouse.

➤ Cell Sorting

- Prepare 50 µL of cell suspension (about 1×10^7 cells), add 3.6 µL Mouse Naïve CD4⁺T Cell Isolation Cocktail, mix fully and incubate for 5 min at room temperature.

Note: Please make sure the cells are single-cell suspension.

- Add isolation buffer to a final volume of 2 mL, centrifuge at 300 g for 5 min. Discard the supernatant, and then resuspend the cells with 50 µL isolation buffer.
- Wash Beads Streptavidin 1.0-N: Vortex beads for 20 seconds, add 9 µL Beads in 1.5 mL EP tube. Put the tube on a 5 mL magnetic rack (self-provided) and stand for 30 s. Remove the supernatant by magnetic separation, then resuspend beads with 200 µL isolation buffer, and stand for 5 minutes at room temperature. Remove the supernatant by magnetic separation, then resuspend Beads with 9 µL isolation buffer.
- Transfer the cells to the bottom of the flow tube (**Note: Avoid adding along tube walls**), add 9 µL washed Mouse Naïve CD4⁺T Beads Streptavidin 1.0-N, mix fully and incubate at room temperature for 5 min.

Note:

- If more than 1×10^7 cells are to be sorted, increase the amount of Mouse Naïve CD4⁺T Cell Isolation Cocktail and Mouse Naïve CD4⁺T Beads Streptavidin 1.0-N proportionally while ensuring the cell density remains 2×10^8 cells/mL. If fewer than 1×10^7 cells are to be sorted, resuspend the cells with 50 µL sorting buffer, add 3.6 µL Mouse Naïve CD4⁺T Cell Isolation Cocktail and 9 µL washed Mouse Naïve CD4⁺T Beads Streptavidin 1.0-N.
 - The 5 mL flow tube is suitable for $\leq 2 \times 10^8$ cells.
- Add isolation buffer to a final volume of 2.5 mL, mix fully with a pipette by blowing up and down for 7-8 times until no particles of magnetic beads are visible. Put the tube on a 5 mL

For Research Use Only

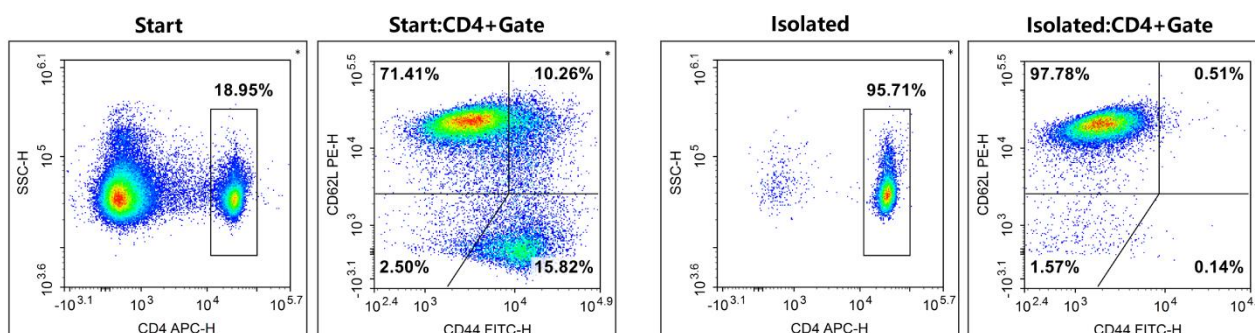
magnetic rack (self-provided) and stand for 5 min.

Note: Please mix the liquid thoroughly to avoid the magnetic beads clumping and affecting the isolation efficiency.

- f) Transfer the cell suspension to a clean centrifuge tube, centrifuge at 300 g for 5 min. Discard the supernatant, resuspend the cells with isolation buffer required for the subsequent experiments.

Note: Please repeat step e) -Step f) and mix the cell suspension obtained by twice if the experiment requires a high recovery rate.

Typical data



Naïve CD4⁺T cells(CD4+CD44^{low}CD62L^{high}) were isolated from the spleen cells of C57BL/6 mice, and were stained with APC Anti-Mouse CD4 Antibody[GK1.5](E-AB-F1097E)、FITC Anti-Mouse CD44 Antibody[NIM-R8] (AN00917C) and PE Anti-Mouse CD62L Antibody[MEL-14](E-AB-F1011D). The purities of start and final isolated fractions were 13.53% and 93.58%, respectively.

Cautions

1. This kit is for research use only.
2. Please take safety precautions and follow the procedures of laboratory reagent operation.
3. Avoid freezing and thawing during the use and storage of the beads.
4. The cell clusters in the cell suspension will affect the purity of cell isolation. Therefore, cell suspension should be filtered with a 70 µm mesh nylon sieve before formal isolation.
5. Cell suspension should be isolation immediately after preparation, the longer the storage time, the greater the impact on cell activity.
6. The cell suspension and magnetic beads should be added directly to the bottom of flow tube to avoid sticking to the wall, resulting in insufficient reaction and affecting the isolation efficiency.
7. In order to ensure the activity of the cells, the whole process of the experiment should be completed on ice as much as possible, except for the incubation at room temperature.
8. It is recommended to use low adsorption pipette tips and centrifuge tubes to avoid the loss of magnetic beads and antibodies due to adsorption.
9. The kit should be used in conjunction with a magnetic rack.
10. Sample type, sample preparation and experimental operation have an important impact on the final isolation cell purity.

For Research Use Only