

## Recombinant Lumican/LUM Monoclonal Antibody

**catalog number: AN300406P**

**Note:** *Centrifuge before opening to ensure complete recovery of vial contents.*

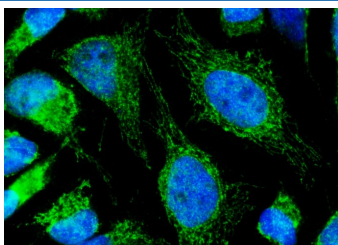
### Description

<b>Reactivity</b>	Human
<b>Immunogen</b>	Recombinant Human Lumican/LUM Protein
<b>Host</b>	Rabbit
<b>Isotype</b>	IgG
<b>Clone</b>	9D14
<b>Purification</b>	Protein A
<b>Buffer</b>	0.2 µm filtered solution in PBS

### Applications Recommended Dilution

<b>ICC/IF</b>	1:20-1:100
---------------	------------

### Data



Immunofluorescence analysis of Human LUM in Hela cells.

Cells were fixed with 4% PFA, permeabilized with 0.3%

Triton X-100 in PBS, blocked with 10% serum, and

incubated with rabbit anti-Human LUM monoclonal antibody

(1:60) at 4°C overnight. Then cells were stained with the

Alexa Fluor® 488-conjugated Goat Anti-rabbit IgG

secondary antibody (green) and counterstained with DAPI

(blue). Positive staining was localized to cytoplasm.

### Preparation & Storage

**Storage** This antibody can be stored at 2°C-8°C for one month without detectable loss of activity. Antibody products are stable for twelve months from date of receipt when stored at -20°C to -80°C. Preservative-Free. Avoid repeated freeze-thaw cycles.

**Shipping** Ice bag

### Background

This gene encodes a member of the small leucine-rich proteoglycan (SLRP) family that includes decorin, biglycan, fibromodulin, keratocan, epiphykan, and osteoglycin. In these bifunctional molecules, the protein moiety binds collagen fibrils and the highly charged hydrophilic glycosaminoglycans regulate interfibrillar spacings. Lumican is the major keratan sulfate proteoglycan of the cornea but is also distributed in interstitial collagenous matrices throughout the body. Lumican may regulate collagen fibril organization and circumferential growth, corneal transparency, and epithelial cell migration and tissue repair.

### For Research Use Only

Toll-free: 1-888-852-8623  
Web: [www.elabscience.com](http://www.elabscience.com)

Tel: 1-832-243-6086  
Email: [techsupport@elabscience.com](mailto:techsupport@elabscience.com)

Fax: 1-832-243-6017

Rev. V1.0